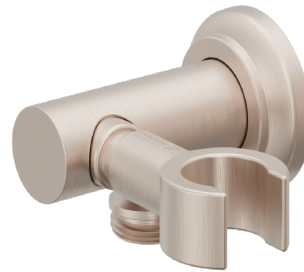




Features

- 25+ artisan finishes including 10+ PVD finishes
- All brass construction
- 1/2" NPT (female) inlet connection
- 1/2" NPSM (male) outlet connection
- Positive-Lock swivel holder
- Accepts most conical handshower hoses



Codes/Standards Applicable

Product meets or exceeds the following:

- ASME A112.18.1/CSA B125.1

