

Features

- 25+ artisan finishes including 10+ PVD finishes
- All brass construction
- Includes all mounting hardware

Codes/Standards Applicable

Product meets or exceeds the following:

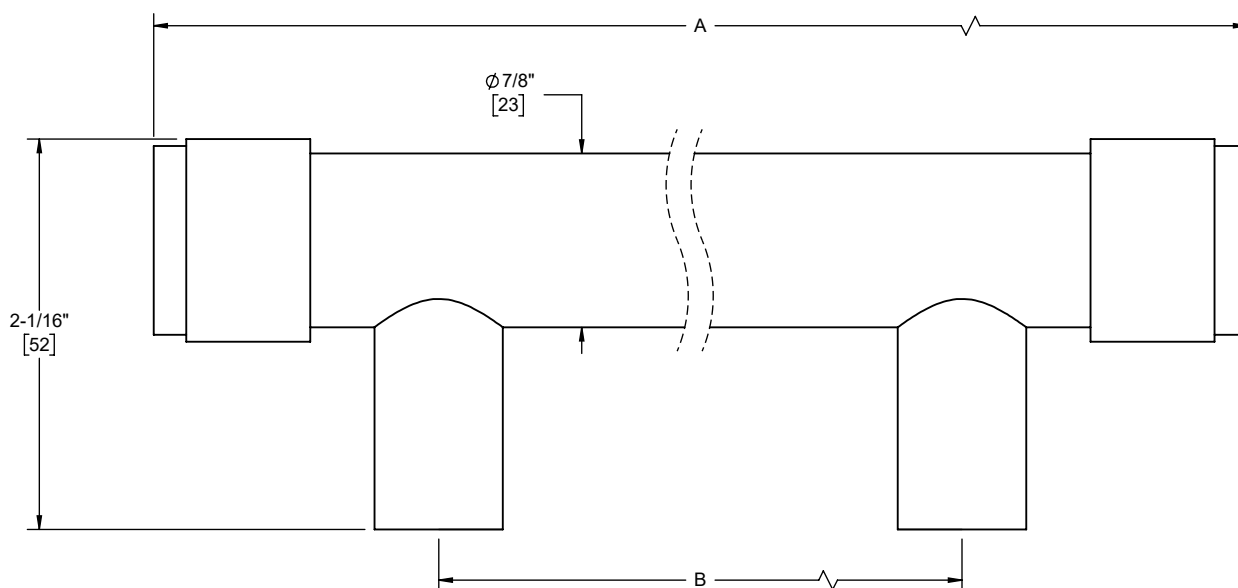
- none applicable

9483-K50-12 shown

9483-K50-12

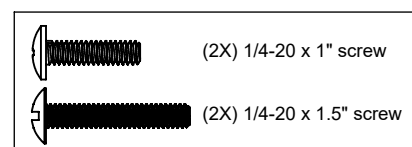
9483-K50-18

9483-K50-24



SKU	A	B
9483-K50-12	15" [381]	12" [305]
9483-K50-18	21" [533]	18" [457]
9483-K50-24	27" [685]	24" [610]

Specifications subject to change without notice



Dimensions are inches, rounded to 1/16"
[Dimensions in brackets are mm, rounded to 1mm]