



California Faucets®

Capitola®

Widespread Lavatory Faucet

**8702A
8702A-XX
8702AP
8702AP-XX**

Features

- 25+ artisan finishes including 10+ PVD finishes
- All brass construction
- 1/4 turn ceramic disc cartridge(s)
- Flexible braided hoses for ease of installation
- ϕ 1-1/4" all brass touch style pop up drain assembly
- 1.2gpm (4.5 L/min) max flow rate
- Handles are available in Brass, Black Glass, and Natural Stone Inserts

Codes/Standards Applicable

Product meets or exceeds the following:

- ASME A112.18.1/CSA B125.1
- NSF 61, NSF 372, CEC & DOE
- EPA WaterSense
- Commonwealth of MA



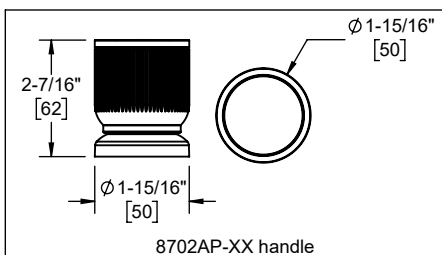
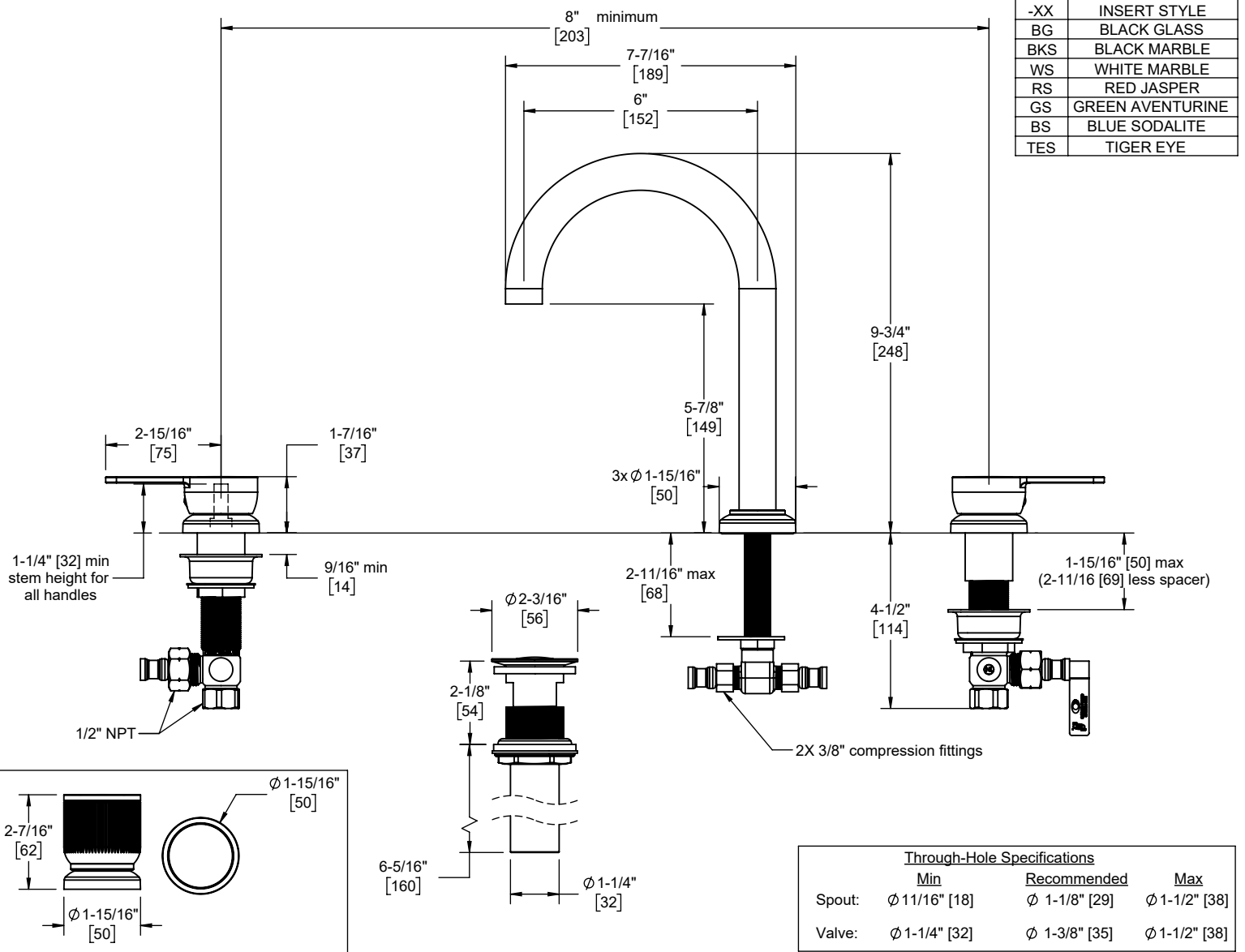
8702A-BG shown



8702AP



XX = Denotes handle insert style



	Through-Hole Specifications		
	Min	Recommended	Max
Spout:	ϕ 11/16" [18]	ϕ 1-1/8" [29]	ϕ 1-1/2" [38]
Valve:	ϕ 1-1/4" [32]	ϕ 1-3/8" [35]	ϕ 1-1/2" [38]

Specifications subject to change without notice

Dimensions are inches, rounded to 1/16"
[Dimensions in brackets are mm, rounded to 1mm]