

Shower Towel Bar / Door Handle Installation Instructions

CALIFORNIA FAUCETS RECOMMENDS THAT ALL PLUMBING PRODUCTS BE INSTALLED BY A LICENSED PROFESSIONAL

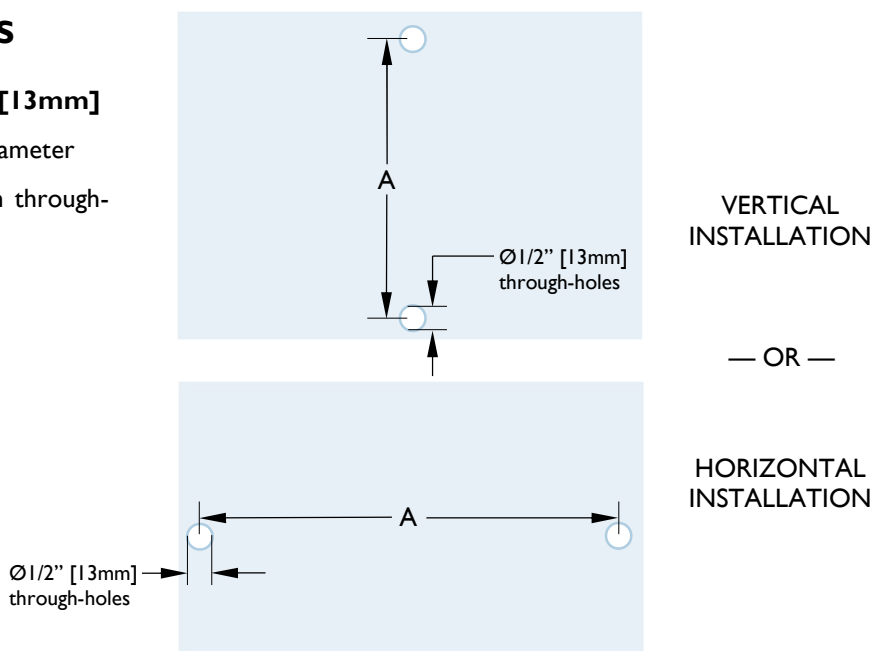
IMPORTANT: Read all instructions prior to installation and provide copy of instructions to consumer.

0 GLASS PANE REQUIREMENTS

- Glass thickness shall be 3/8" [10mm] to 1/2" [13mm]
- All through-holes shall be Ø1/2" [13mm] in diameter
- See table below for correct distances between through-hole centers

SKU	A [mm]
SD-TB-XX-08	8" [203]
SD-TB-XX-12	12" [305]
SD-TB-XX-18	18" [457]
SD-TB-XX-24	24" [610]

"XX" represents series

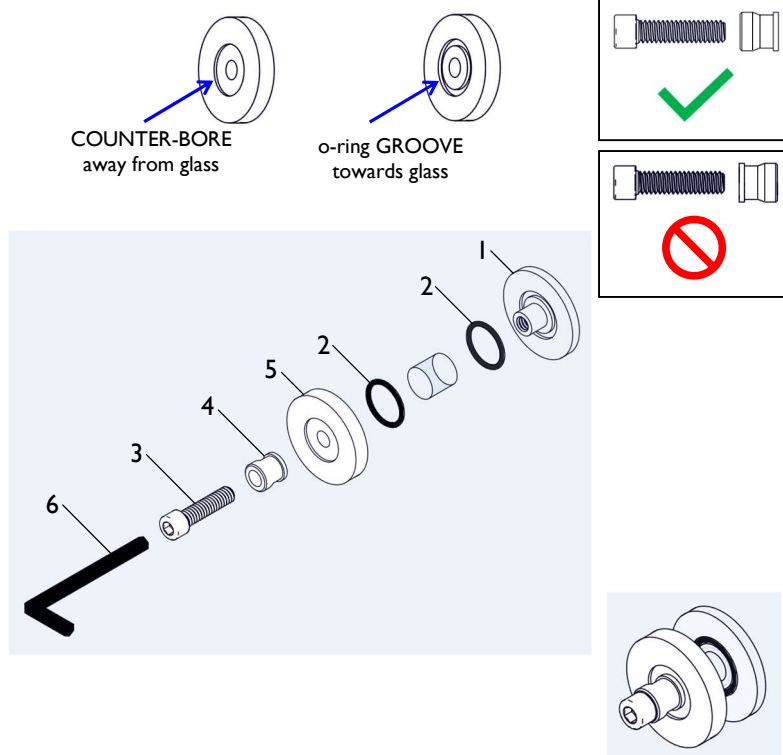


I INSTALLING COVER PLATES

IMPORTANT: Ensure that there is always an O-RING (2) on every BASE RING (3) and COVER (1) when mounting to glass pane

NOTE: BASE RING o-ring groove shall be towards glass

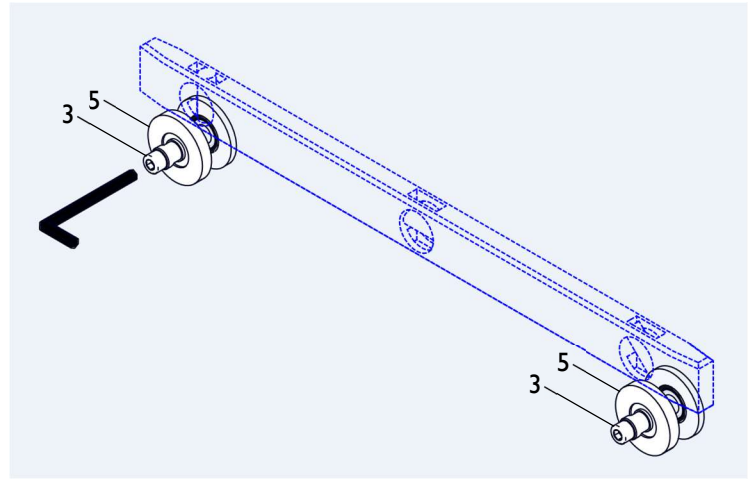
- Place O-RING (2) into groove of COVER (1)
- Insert COVER (1) into through-hole
- Place O-RING (2) into groove of BASE RING (5)
- Secure PLUG (4) & BASE RING (5) by tightening SCREW (3) into COVER (1) using HEX KEY (6)
- Repeat this step on other through-hole



2

CHECKING & ADJUSTING LEVEL

- Use level to check that BASE RINGS (5) are level
- If not, loosen SCREW (3) and adjust BASE RING (5) so that it is level with the other, then retighten



3

MOUNTING HANDLE / TOWEL BAR

- Place BAR (7) onto PLUGS (4) and slide up against BASE RINGS (5)
- Fasten SETSCREWS (6a) using HEX KEY (8)

