

Shower Door Towel Bar / Handle & Hook Installation Instructions

CALIFORNIA FAUCETS RECOMMENDS THAT ALL PLUMBING PRODUCTS BE INSTALLED BY A LICENSED PROFESSIONAL

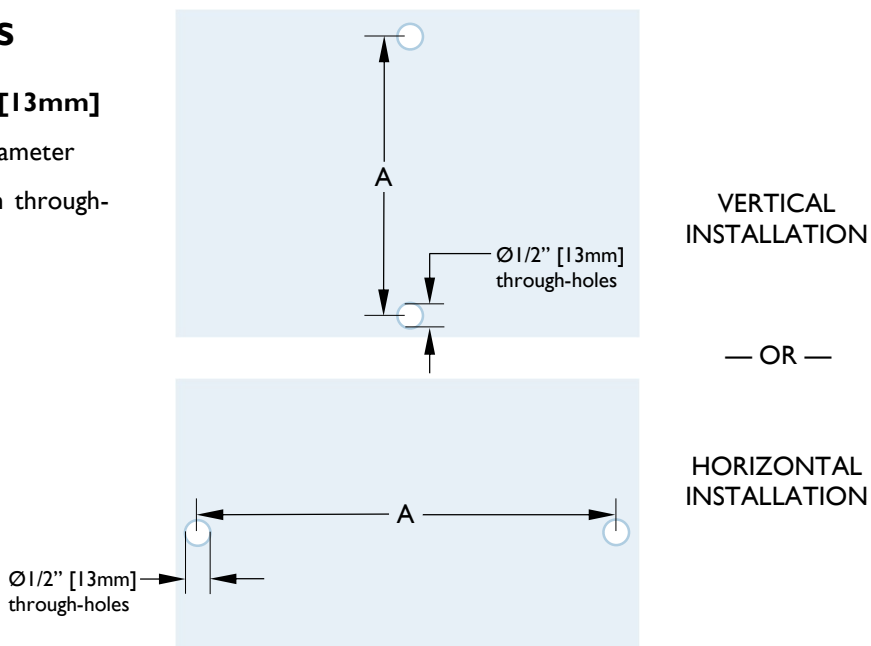
IMPORTANT: Read all instructions prior to installation and provide copy of instructions to consumer.

0 GLASS PANE REQUIREMENTS

- Glass thickness shall be 3/8" [10mm] to 1/2" [13mm]
- All through-holes shall be Ø1/2" [13mm] in diameter
- See table below for correct distances between through-hole centers

SKU	A [mm]
SD-TBHK-XX-08	8" [203]
SD-TBHK-XX-12	12" [305]
SD-TBHK-XX-18	18" [457]
SD-TBHK-XX-24	24" [610]

"XX" represents series



I INSTALLING COVER PLATES

IMPORTANT: Ensure that there is always an O-RING (2) on every BASE RING (3) and COVER (1) when mounting to glass pane

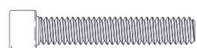
NOTE: BASE RING o-ring groove shall be towards glass

NOTE: There are two 1/4"-20 SCREW lengths:

SCREW (3) = 1" [25mm] long

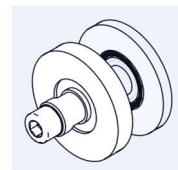
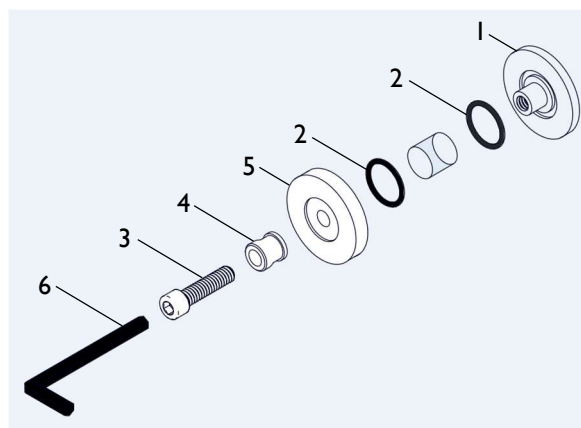
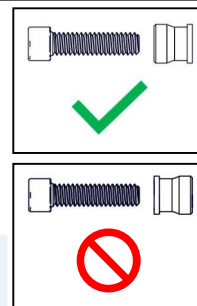
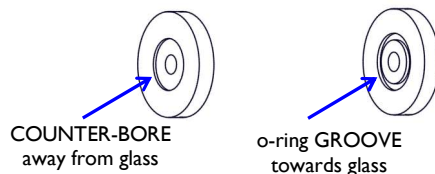


SCREW (6) = 1-1/2" [38mm] long



Screws MUST NOT be switched

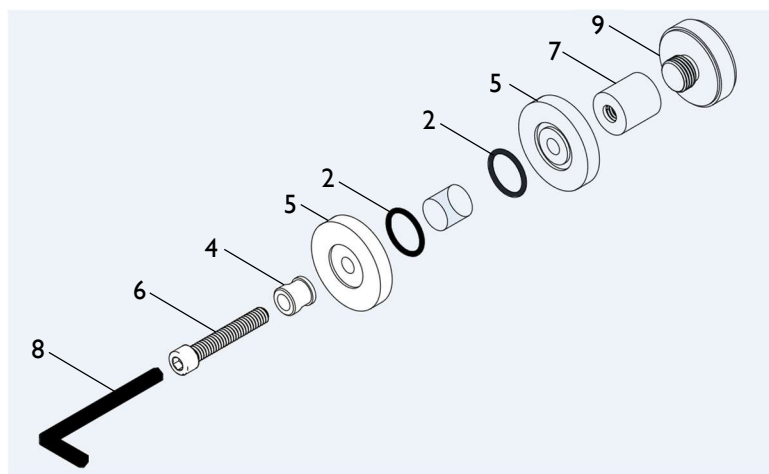
- Place O-RING (2) into groove of COVER (1)
- Insert COVER (1) into through-hole
- Place O-RING (2) into groove of BASE RING (5)
- Secure PLUG (4) & BASE RING (5) by tightening SCREW (3) into COVER (1) using HEX KEY (6)



2

MOUNTING HOOK

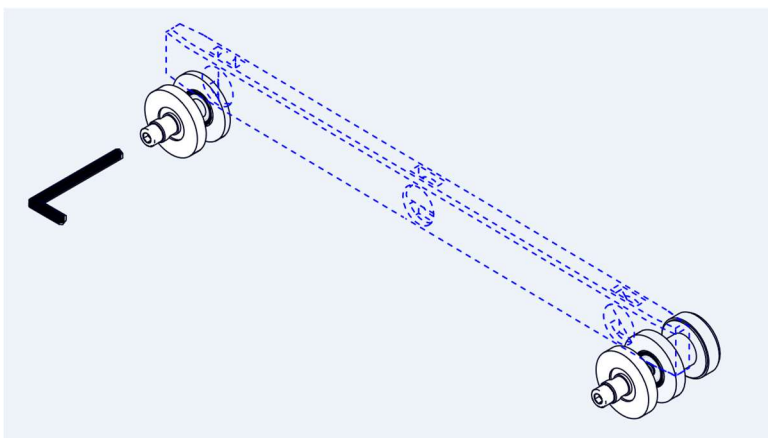
- Place O-RING (2) into the GROOVE of BASE RINGS (5)
- Secure PLUG (4) & BASE RINGS (5) by tightening SCREW (6) into HOOK POST (7) using HEX KEY (8)
- Fasten HOOK TOP (9) to HOOK POST (7)



3

CHECKING & ADJUSTING LEVEL

- Use level to check that BASE RINGS (5) are level
- If not, loosen SCREW (3 or 6), adjust BASE RING (5) so that it is level with the other, then retighten



4

MOUNTING HANDLE / TOWEL BAR

- Place BAR (10) onto PLUGS (4) and slide up against BASE RINGS (5)
- Fasten SETSCREWS (10a) using HEX KEY (11)

