

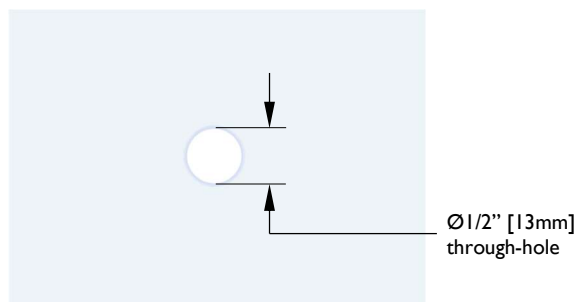
## Shower Door Hook / Double Hooks Installation Instructions

**CALIFORNIA FAUCETS RECOMMENDS THAT ALL PLUMBING PRODUCTS BE INSTALLED BY A LICENSED PROFESSIONAL**

**IMPORTANT:** Read all instructions prior to installation and provide copy of instructions to consumer.

### 0 GLASS PANE REQUIREMENTS

- Glass thickness shall be 3/8" [10mm] to 1/2" [13mm]
- All through-holes shall be Ø1/2" [13mm] in diameter



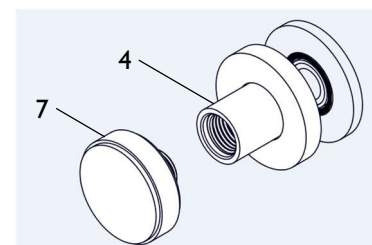
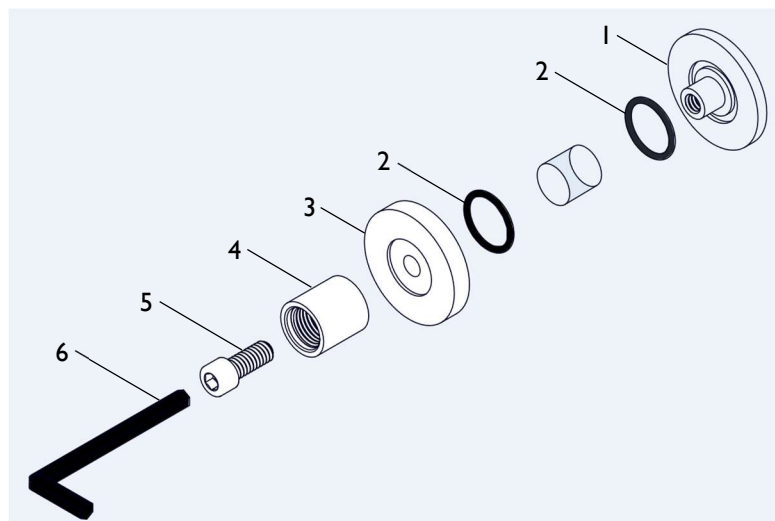
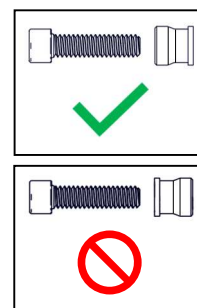
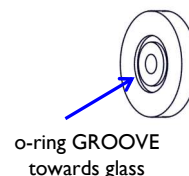
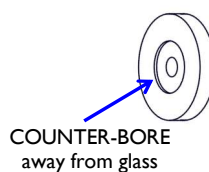
### 1A INSTALLING SINGLE HOOK

**IMPORTANT:** For SD-DHK-XX, skip this step and go to Step 1B

**IMPORTANT:** Ensure that there is always an O-RING (2) on every BASE RING (3) and COVER (1) when mounting to glass pane

**NOTE:** BASE RING o-ring groove shall be towards glass

- Place O-RING (2) into groove of COVER (1)
- Insert COVER (1) into through-hole
- Place O-RING (2) into groove of BASE RING (3)
- Secure HOOK POST (5) & BASE RING (3) by tightening SCREW (4) into COVER (1) using HEX KEY (6)
- Fasten HOOK TOP (7) onto HOOK POST (4)



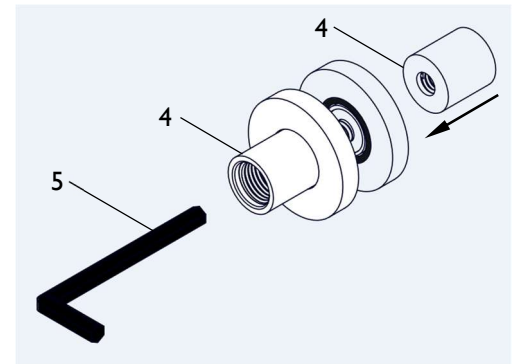
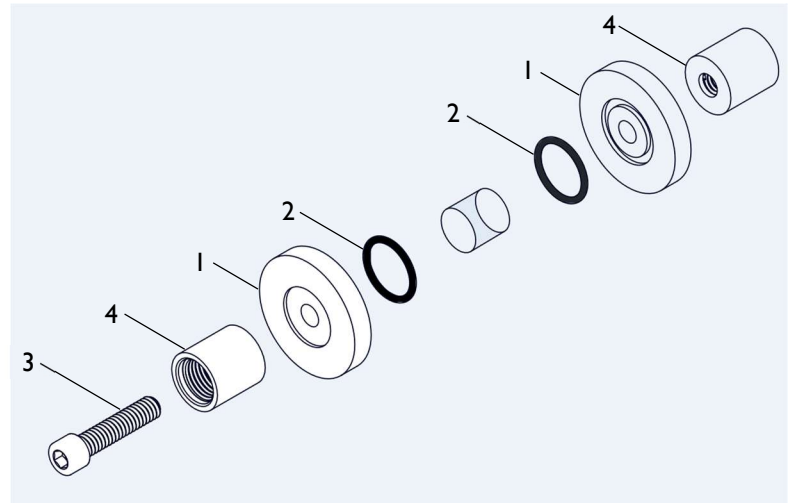
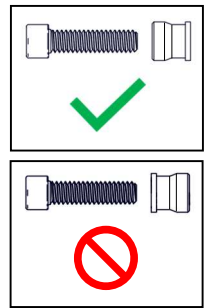
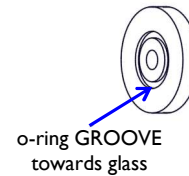
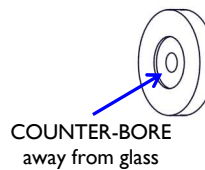
## 1B INSTALLING DOUBLE POSTS

**IMPORTANT:** This step is only for SD-DHK-XX

**IMPORTANT:** Ensure that there is always an O-RING (2) on every BASE RING (3) and COVER (1) when mounting to glass pane

**NOTE:** BASE RING o-ring groove shall be towards glass

- Place O-RING (2) into groove of both BASE RINGS (1)
- Secure HOOK POSTS (4) & BASE RINGS (1) by tightening SCREW (3) into HOOK POST (4) using HEX KEY (5)



## 2 INSTALLING HOOK TOPS

- Fasten HOOK TOPS (6) into HOOK POSTS (4)

