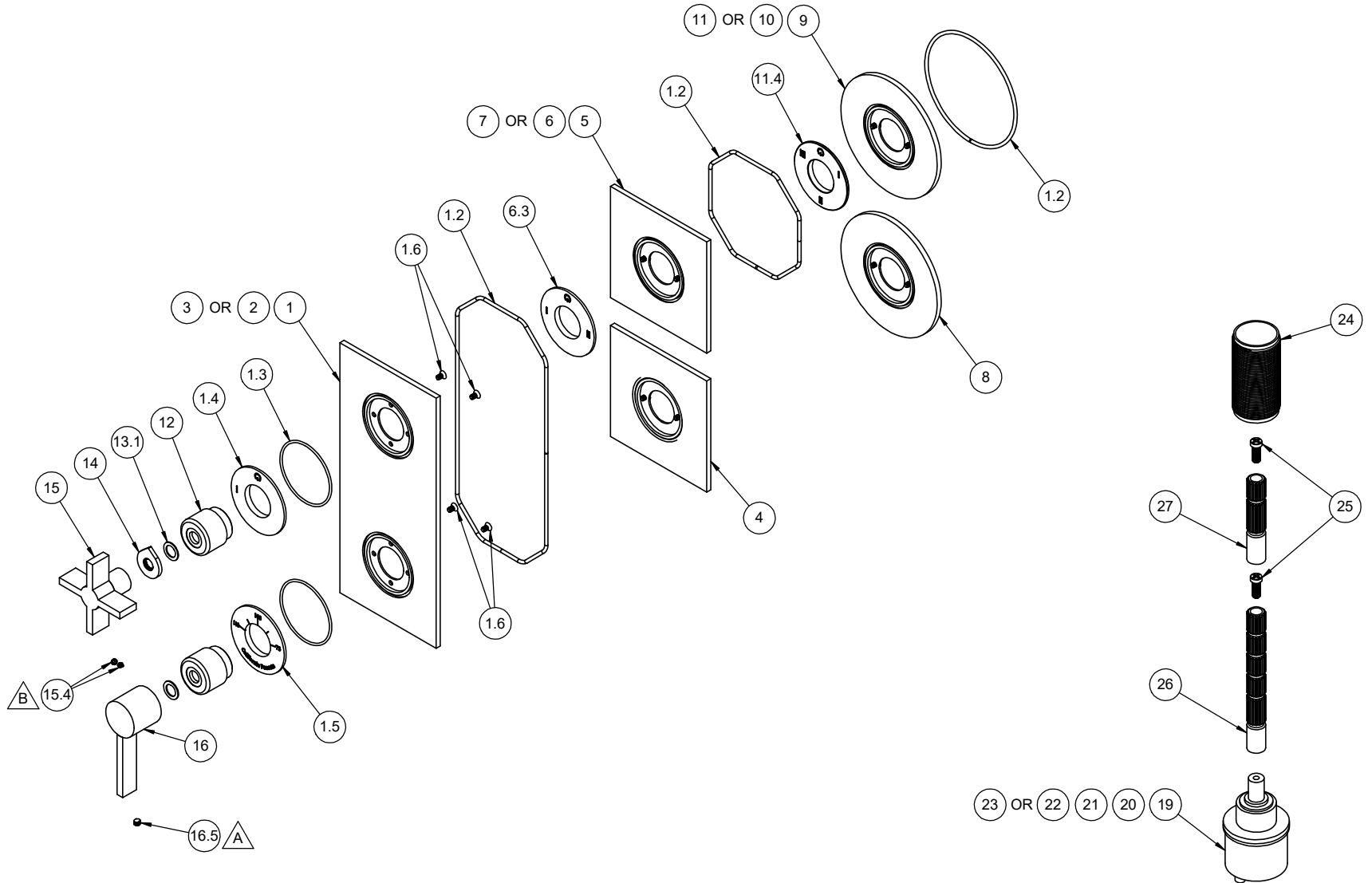


- △ REQUIRES ITEM 17
- △ REQUIRES ITEM 18

TO-THRR1-E3	TO-THFF1-E3	TO-THF1-E3
TO-THRR2-E3	TO-THFF2-E3	TO-THF2-E3
TO-THRR2S-E3	TO-THFF2S-E3	TO-THF2S-E3
TO-THRR3-E3	TO-THFF3-E3	TO-THF3-E3
TO-THRR3S-E3	TO-THFF3S-E3	TO-THF3S-E3



TO-THRR1-E3 TO-THFF1-E3 TO-THF1-E3  
 TO-THRR2-E3 TO-THFF2-E3 TO-THF2-E3  
 TO-THRR2S-E3 TO-THFF2S-E3 TO-THF2S-E3  
 TO-THRR3-E3 TO-THFF3-E3 TO-THF3-E3  
 TO-THRR3S-E3 TO-THFF3S-E3 TO-THF3S-E3

To order spare parts add and/or replace as stated below:

SPD- prefix added to part number(s)  
 -ZZ replaced with finish code (see finish table)  
 -WW replaced with -90 (light finish) or -96 (dark finish)

Ex: SPD-7-100463-PC or SPD-86030-96

ITEM	PART NO.	DESCRIPTION	QTY	
14	11523-ZZ	INDICATOR, 2 HANDLE THERM, DIAL	1	
15	7-100656-ZZ	ASM, SHORT BLADE CROSS HDL <i>(incl. 15.4)</i>	1	
15.4	86030-WW	SETSCREW 8-32 X 1/8 SCKT HD CUP PT SS	2	
16	7-100319-ZZ	ASM, HANDLE, RD HUB SHORT & BLADE LEVER <i>(incl. 16.5)</i>	1	
16.5	86047-90	SETSCREW 10-24 X 3/16 SCKT HD CONE PT SS	1	
for ITEM 16.5	17	882043-99	KEY, ALLEN, 3/32", BLACK	1
for ITEM 15.4	18	882042-99	KEY, ALLEN, 5/64", BLACK	1
for TO-THX1	19	880639-99	CART, Ø33 1 OUTLET DIVERTER	1
for TO-THX2	20	880640-99	CART, Ø33 2 OUTLET DIVERTER	1
for TO-THX3	21	880641-99	CART, Ø33 3 OUTLET DIVERTER	1
for TO-THX2S	22	880657-99	CART, Ø33 2 OUTLET DIVERTER - SHARED	1
for TO-THX3S	23	880658-99	CART, Ø33 3 OUTLET DIVERTER - SHARED	1
	24	11527-ZZ	ALL THREAD, THERM 2.0 TRIM	1
	25	86078-90	SCREW, M4 X 0.7 X 10MM, w/Ø5.80 PHL PH HD SS	2
	26	880137-98	BROACH EXTENSION 3-1/4"(L) X 16T(M) X 20T(F)	1
	27	880663-98	BROACH EXTENSION 2"(L) X 16T(M) X 20T(F)	1

ITEM	PART NO.	DESCRIPTION	QTY	
for TO-THF1	1	7-100746-ZZ	ASM, THERM 2.0 FLATE PLATE, 1 OUTLET <i>(incl. 1.2, 1.3, 1.4, 1.5, 1.6)</i>	1
	1.2	87127-80	O-RING CORD 2.62 (.103") SOFT BUNA-N A50 <i>(Order quantity will be 23")</i>	1
	1.3	881487-99	O-RING Ø50.52 X 1.78 (-033) BUNA-N A70	2
	1.4	11519-ZZ	NOMENCLATURE, 2 HANDLE THERM, 1-WAY DIVERTER	1
	1.5	11522-ZZ	NOMENCLATURE, 2 HANDLE THERM, TEMP	1
	1.6	86171-90	SCREW 6-32 X 1/4" PH FLT HD SS	4
for TO-THF2 & TO-THF2S	2	7-100747-ZZ	ASM, THERM 2.0 FLATE PLATE, 2 OUTLET <i>(incl. 1.2, 1.3, 1.5, 1.6, 6.3)</i>	1
for TO-THF3 & TO-THF3S	3	7-100748-ZZ	ASM, THERM 2.0 FLATE PLATE, 3 OUTLET <i>(incl. 1.2, 1.3, 1.5, 1.6, 11.4)</i>	1
for all TO-THFF	4	7-100772-ZZ	ASM, THERM 2.0 INDIV FLAT PLATE, TEMP <i>(incl. 1.2, 1.3, 1.5, 1.6)</i>	1
for TO-THFF1	5	7-100756-ZZ	ASM, THERM 2.0 INDIV FLAT PLATE, 1 OUTLET <i>(incl. 1.2, 1.3, 1.4, 1.6)</i>	1
for TO-THFF2 & TO-THFF2S	6	7-100757-ZZ	ASM, THERM 2.0 INDIV FLAT PLATE, 2 OUTLET <i>(incl. 1.2, 1.3, 1.6, 6.3)</i>	1
	6.3	11520-ZZ	NOMENCLATURE, 2 HANDLE THERM, 2-WAY DIVERTER	1
for TO-THFF3 & TO-THFF3S	7	7-100758-ZZ	ASM, THERM 2.0 INDIV FLAT PLATE, 3 OUTLET <i>(incl. 1.2, 1.3, 1.6, 11.4)</i>	1
for all TO-THRR	8	7-100774-ZZ	ASM, THERM 2.0 INDIV ROUND PLATE, TEMP <i>(incl. 1.2, 1.3, 1.5, 1.6)</i>	1
for TO-THRR1	9	7-100766-ZZ	ASM, THERM 2.0 INDIV ROUND PLATE, 1 OUTLET <i>(incl. 1.2, 1.3, 1.4, 1.6)</i>	1
for TO-THRR2 & TO-THRR2S	10	7-100767-ZZ	ASM, THERM 2.0 INDIV ROUND PLATE, 2 OUTLET <i>(incl. 1.2, 1.3, 1.6, 6.3)</i>	1
for TO-THRR3 & TO-THRR3S	11	7-100768-ZZ	ASM, THERM 2.0 INDIV ROUND PLATE, 3 OUTLET <i>(incl. 1.2, 1.3, 1.6, 11.4)</i>	1
	11.4	11521-ZZ	NOMENCLATURE, 2 HANDLE THERM, 3-WAY DIVERTER	1
	12	11517-ZZ	ESCUTCHEON, 2 HANDLE THERM, CONT	2
	13.1	87340-81	WSHR Ø.590" X Ø.390" X .030" BLK UHMW	2