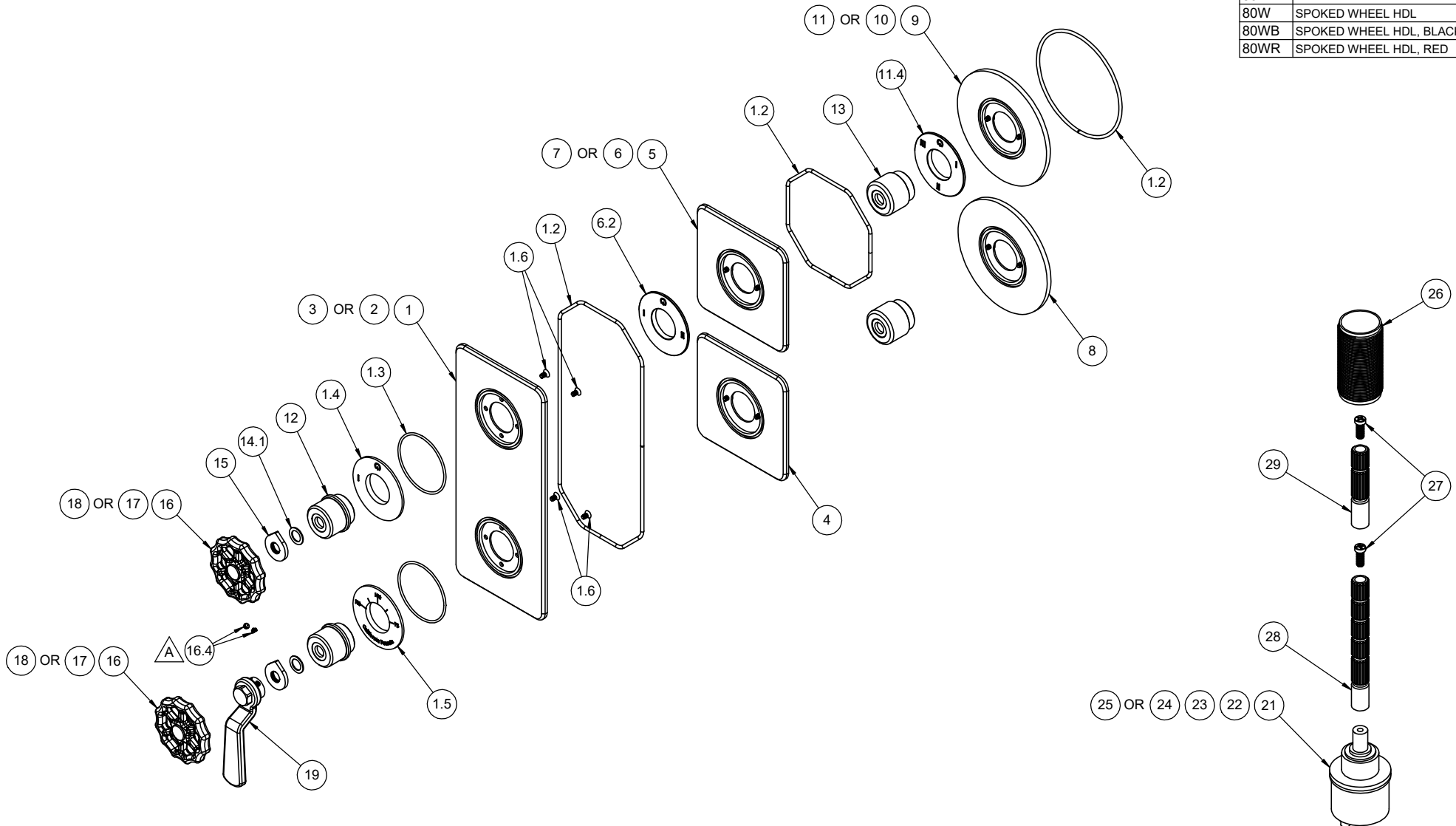


△ REQUIRES ITEM 20

TO-THRR1-XX	TO-THQQ1-XX	TO-THQ1-XX
TO-THRR2-XX	TO-THQQ2-XX	TO-THQ2-XX
TO-THRR2S-XX	TO-THQQ2S-XX	TO-THQ2S-XX
TO-THRR3-XX	TO-THQQ3-XX	TO-THQ3-XX
TO-THRR3S-XX	TO-THQQ3S-XX	TO-THQ3S-XX

-XX	HANDLE STYLE
80	BALL LEVER HDL
80W	SPOKED WHEEL HDL
80WB	SPOKED WHEEL HDL, BLACK
80WR	SPOKED WHEEL HDL, RED



-XX	HANDLE STYLE
80	BALL LEVER HDL
80W	SPOKED WHEEL HDL
80WB	SPOKED WHEEL HDL, BLACK
80WR	SPOKED WHEEL HDL, RED

TO-THRR1-XX	TO-THQQ1-XX	TO-THQ1-XX
TO-THRR2-XX	TO-THQQ2-XX	TO-THQ2-XX
TO-THRR2S-XX	TO-THQQ2S-XX	TO-THQ2S-XX
TO-THRR3-XX	TO-THQQ3-XX	TO-THQ3-XX
TO-THRR3S-XX	TO-THQQ3S-XX	TO-THQ3S-XX

To order spare parts add and/or replace as stated below:

SPD- prefix added to part number(s)
-ZZ replaced with finish code (see finish table)
-WW replaced with **-90** (light finish) or **-96** (dark finish)

Ex: **SPD-7-100463-PC** or **SPD-86030-96**

	ITEM	PART NO.	DESCRIPTION	QTY
for 80W Series	16	7-100465-ZZ	ASM, SPOKED WHEEL <i>(incl. 16.4)</i>	1
	16.4	86170-WW	SETSCREW 8-32 X 1/8" SCKT CONE PT SS	2
for 80WB Series	17	7-100465B-ZZ	ASM, SPOKED WHEEL - BLACK <i>(incl. 16.4)</i>	1
for 80WR Series	18	7-100465R-ZZ	ASM, SPOKED WHEEL - RED <i>(incl. 16.4)</i>	1
for 80 Series	19	7-100536-ZZ	ASM, BALL LEVER HDL <i>(incl. 16.4)</i>	1
for ITEM 16.4	20	882042-99	KEY, ALLEN, 5/64", BLACK	1
for TO-THX1	21	880639-99	CART, Ø33 1 OUTLET DIVERTER	1
for TO-THX2	22	880640-99	CART, Ø33 2 OUTLET DIVERTER	1
for TO-THX3	23	880641-99	CART, Ø33 3 OUTLET DIVERTER	1
for TO-THX2S	24	880657-99	CART, Ø33 2 OUTLET DIVERTER - SHARED	1
for TO-THX3S	25	880658-99	CART, Ø33 3 OUTLET DIVERTER - SHARED	1
	26	11527-ZZ	ALL THREAD, THERM 2.0 TRIM	1
	27	86078-90	SCREW, M4 X 0.7 X 10MM, w/Ø5.80 PHL PH HD SS	2
	28	880137-98	BROACH EXTENSION 3-1/4"(L) X 16T(M) X 20T(F)	1
	29	880663-98	BROACH EXTENSION 2"(L) X 16T(M) X 20T(F)	1

	ITEM	PART NO.	DESCRIPTION	QTY
for TO-THQ1	1	7-100751-ZZ	ASM, THERM 2.0 QUAD PLATE, 1 OUTLET <i>(incl. 1.2, 1.3, 1.4, 1.5, 1.6)</i>	1
	1.2	87127-80	O-RING CORD 2.62 (.103") SOFT BUNA-N A50 <i>(Order quantity will be 23")</i>	1
	1.3	881487-99	O-RING Ø50.52 X 1.78 (-033) BUNA-N A70	2
	1.4	11519-ZZ	NOMENCLATURE, 2 HANDLE THERM, 1-WAY DIVERTER	1
	1.5	11522-ZZ	NOMENCLATURE, 2 HANDLE THERM, TEMP	1
	1.6	86171-90	SCREW 6-32 X 1/4" PH FLT HD SS	4
for TO-THQ2 & TO-THQ2S	2	7-100752-ZZ	ASM, THERM 2.0 QUAD PLATE, 2 OUTLET <i>(incl. 1.2, 1.3, 1.5, 1.6, 6.2)</i>	1
for TO-THQ3 & TO-THQ3S	3	7-100753-ZZ	ASM, THERM 2.0 QUAD PLATE, 3 OUTLET <i>(incl. 1.2, 1.3, 1.5, 1.6, 11.4)</i>	1
for all TO-THQQ	4	7-100773-ZZ	ASM, THERM 2.0 INDIV QUAD PLATE, TEMP <i>(incl. 1.2, 1.3, 1.5, 1.6)</i>	1
for TO-THQQ1	5	7-100761-ZZ	ASM, THERM 2.0 INDIV QUAD PLATE, 1 OUTLET <i>(incl. 1.2, 1.3, 1.4, 1.6)</i>	1
for TO-THQQ2 & TO-THQQ2S	6	7-100762-ZZ	ASM, THERM 2.0 INDIV QUAD PLATE, 2 OUTLET <i>(incl. 1.2, 1.3, 1.6, 6.2)</i>	1
	6.2	11520-ZZ	NOMENCLATURE, 2 HANDLE THERM, 2-WAY DIVERTER	1
for TO-THQQ3 & TO-THQQ3S	7	7-100763-ZZ	ASM, THERM 2.0 INDIV QUAD PLATE, 3 OUTLET <i>(incl. 1.2, 1.3, 1.6, 11.4)</i>	1
for all TO-THRR	8	7-100774-ZZ	ASM, THERM 2.0 INDIV ROUND PLATE, TEMP <i>(incl. 1.2, 1.3, 1.5, 1.6)</i>	1
for TO-THRR1	9	7-100766-ZZ	ASM, THERM 2.0 INDIV ROUND PLATE, 1 OUTLET <i>(incl. 1.2, 1.3, 1.4, 1.6)</i>	1
for TO-THRR2 & TO-THRR2S	10	7-100767-ZZ	ASM, THERM 2.0 INDIV ROUND PLATE, 2 OUTLET <i>(incl. 1.2, 1.3, 1.6, 6.2)</i>	1
for TO-THRR3 & TO-THRR3S	11	7-100768-ZZ	ASM, THERM 2.0 INDIV ROUND PLATE, 3 OUTLET <i>(incl. 1.2, 1.3, 1.6, 11.4)</i>	1
	11.4	11521-ZZ	NOMENCLATURE, 2 HANDLE THERM, 3-WAY DIVERTER	1
for all TO-THQ & TO-THQQ	12	11518-ZZ	ESCUTCHEON, 2 HANDLE THERM, TRANS	2
for all TO-THRR	13	11517-ZZ	ESCUTCHEON, 2 HANDLE THERM, CONT	2
	14.1	87340-81	WSHR Ø.590" X Ø.390" X .030" BLK UHMW	2
	15	11523-ZZ	INDICATOR, 2 HANDLE THERM, DIAL	2