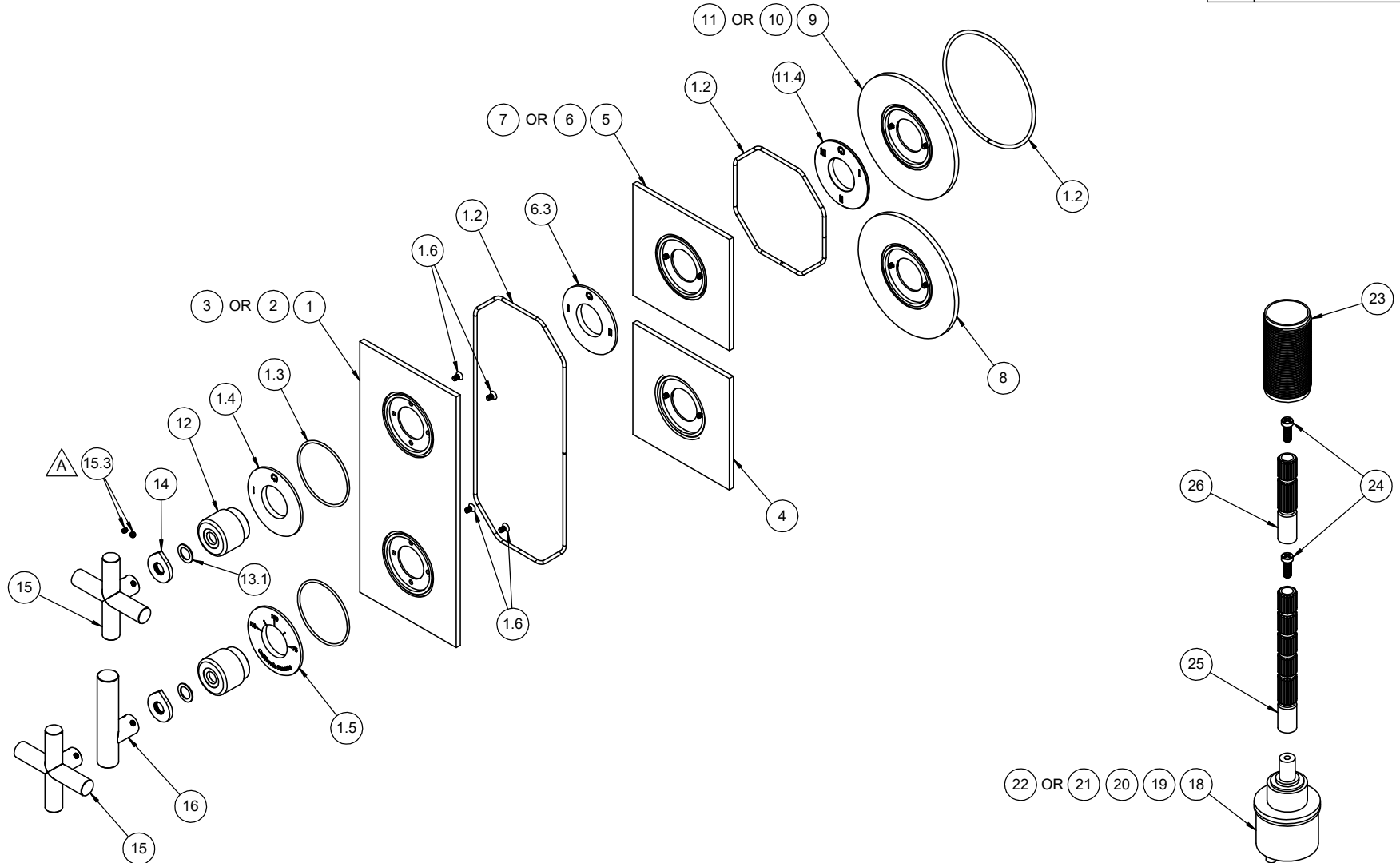


△ REQUIRES ITEM 17

TO-THRR1-XX	TO-THFF1-XX	TO-THF1-XX
TO-THRR2-XX	TO-THFF2-XX	TO-THF2-XX
TO-THRR2S-XX	TO-THFF2S-XX	TO-THF2S-XX
TO-THRR3-XX	TO-THFF3-XX	TO-THF3-XX
TO-THRR3S-XX	TO-THFF3S-XX	TO-THF3S-XX

-XX	HANDLE STYLE
65	CTEMP CROSS HDL
66	SHORT CONT LVR HDL



TO-THRR1-XX TO-THFF1-XX TO-THF1-XX
 TO-THRR2-XX TO-THFF2-XX TO-THF2-XX
 TO-THRR2S-XX TO-THFF2S-XX TO-THF2S-XX
 TO-THRR3-XX TO-THFF3-XX TO-THF3-XX
 TO-THRR3S-XX TO-THFF3S-XX TO-THF3S-XX

-XX	HANDLE STYLE
65	CTEMP CROSS HDL
66	SHORT CONT LVR HDL

To order spare parts add and/or replace as stated below:

SPD- prefix added to part number(s)
-ZZ replaced with finish code (see finish table)
-WW replaced with **-90** (light finish) or **-96** (dark finish)

Ex: **SPD-7-100463-PC** or **SPD-86030-96**

ITEM	PART NO.	DESCRIPTION	QTY
for TO-THF1	1	7-100746-ZZ ASM, THERM 2.0 FLATE PLATE, 1 OUTLET <i>(incl. 1.2, 1.3, 1.4, 1.5, 1.6)</i>	1
	1.2	87127-80 O-RING CORD 2.62 (.103") SOFT BUNA-N A50 <i>(Order quantity will be 23")</i>	1
	1.3	881487-99 O-RING Ø50.52 X 1.78 (-033) BUNA-N A70	2
	1.4	11519-ZZ NOMENCLATURE, 2 HANDLE THERM, 1-WAY DIVERTER	1
	1.5	11522-ZZ NOMENCLATURE, 2 HANDLE THERM, TEMP	1
	1.6	86171-90 SCREW 6-32 X 1/4" PH FLT HD SS	4
for TO-THF2 & TO-THF2S	2	7-100747-ZZ ASM, THERM 2.0 FLATE PLATE, 2 OUTLET <i>(incl. 1.2, 1.3, 1.5, 1.6, 6.3)</i>	1
	3	7-100748-ZZ ASM, THERM 2.0 FLATE PLATE, 3 OUTLET <i>(incl. 1.2, 1.3, 1.5, 1.6, 11.4)</i>	1
for all TO-THFF	4	7-100772-ZZ ASM, THERM 2.0 INDIV FLAT PLATE, TEMP <i>(incl. 1.2, 1.3, 1.5, 1.6)</i>	1
	5	7-100756-ZZ ASM, THERM 2.0 INDIV FLAT PLATE, 1 OUTLET <i>(incl. 1.2, 1.3, 1.4, 1.6)</i>	1
for TO-THFF2 & TO-THFF2S	6	7-100757-ZZ ASM, THERM 2.0 INDIV FLAT PLATE, 2 OUTLET <i>(incl. 1.2, 1.3, 1.6, 6.3)</i>	1
	6.3	11520-ZZ NOMENCLATURE, 2 HANDLE THERM, 2-WAY DIVERTER	1
for TO-THFF3 & TO-THFF3S	7	7-100758-ZZ ASM, THERM 2.0 INDIV FLAT PLATE, 3 OUTLET <i>(incl. 1.2, 1.3, 1.6, 11.4)</i>	1
	8	7-100774-ZZ ASM, THERM 2.0 INDIV ROUND PLATE, TEMP <i>(incl. 1.2, 1.3, 1.5, 1.6)</i>	1
for all TO-THRR	9	7-100766-ZZ ASM, THERM 2.0 INDIV ROUND PLATE, 1 OUTLET <i>(incl. 1.2, 1.3, 1.4, 1.6)</i>	1
	10	7-100767-ZZ ASM, THERM 2.0 INDIV ROUND PLATE, 2 OUTLET <i>(incl. 1.2, 1.3, 1.6, 6.3)</i>	1
for TO-THRR2 & TO-THRR2S	10	7-100767-ZZ ASM, THERM 2.0 INDIV ROUND PLATE, 2 OUTLET <i>(incl. 1.2, 1.3, 1.6, 6.3)</i>	1
	11	7-100768-ZZ ASM, THERM 2.0 INDIV ROUND PLATE, 3 OUTLET <i>(incl. 1.2, 1.3, 1.6, 11.4)</i>	1
for TO-THRR3 & TO-THRR3S	11	7-100768-ZZ ASM, THERM 2.0 INDIV ROUND PLATE, 3 OUTLET <i>(incl. 1.2, 1.3, 1.6, 11.4)</i>	1
	11.4	11521-ZZ NOMENCLATURE, 2 HANDLE THERM, 3-WAY DIVERTER	1
	12	11517-ZZ ESCUTCHEON, 2 HANDLE THERM, CONT	2
	13.1	87340-81 WSHR Ø.590" X Ø.390" X .030" BLK UHMW	2

ITEM	PART NO.	DESCRIPTION	QTY
	14	11523-ZZ INDICATOR, 2 HANDLE THERM, DIAL	2
for 65 Series	15	7-653143-ZZ KIT, CTEMP CROSS HDL, 65 SERIES <i>(incl. 15.3)</i>	2
	15.3	86030-WWW SETSCREW 8-32 X 1/8 SCKT HD CUP PT SS	2
for 66 Series	16	7-663145-ZZ ASM, HANDLE, SHORT CONT LVR <i>(incl. 15.3)</i>	1
for ITEM 15.3	17	882042-99 KEY, ALLEN, 5/64", BLACK	1
for TO-THX1	18	880639-99 CART, Ø33 1 OUTLET DIVERTER	1
for TO-THX2	19	880640-99 CART, Ø33 2 OUTLET DIVERTER	1
for TO-THX3	20	880641-99 CART, Ø33 3 OUTLET DIVERTER	1
for TO-THX2S	21	880657-99 CART, Ø33 2 OUTLET DIVERTER - SHARED	1
for TO-THX3S	22	880658-99 CART, Ø33 3 OUTLET DIVERTER - SHARED	1
	23	11527-ZZ ALL THREAD, THERM 2.0 TRIM	1
	24	86078-90 SCREW, M4 X 0.7 X 10MM, w/Ø5.80 PHL PH HD SS	2
	25	880137-98 BROACH EXTENSION 3-1/4"(L) X 16T(M) X 20T(F)	1
	26	880663-98 BROACH EXTENSION 2"(L) X 16T(M) X 20T(F)	1