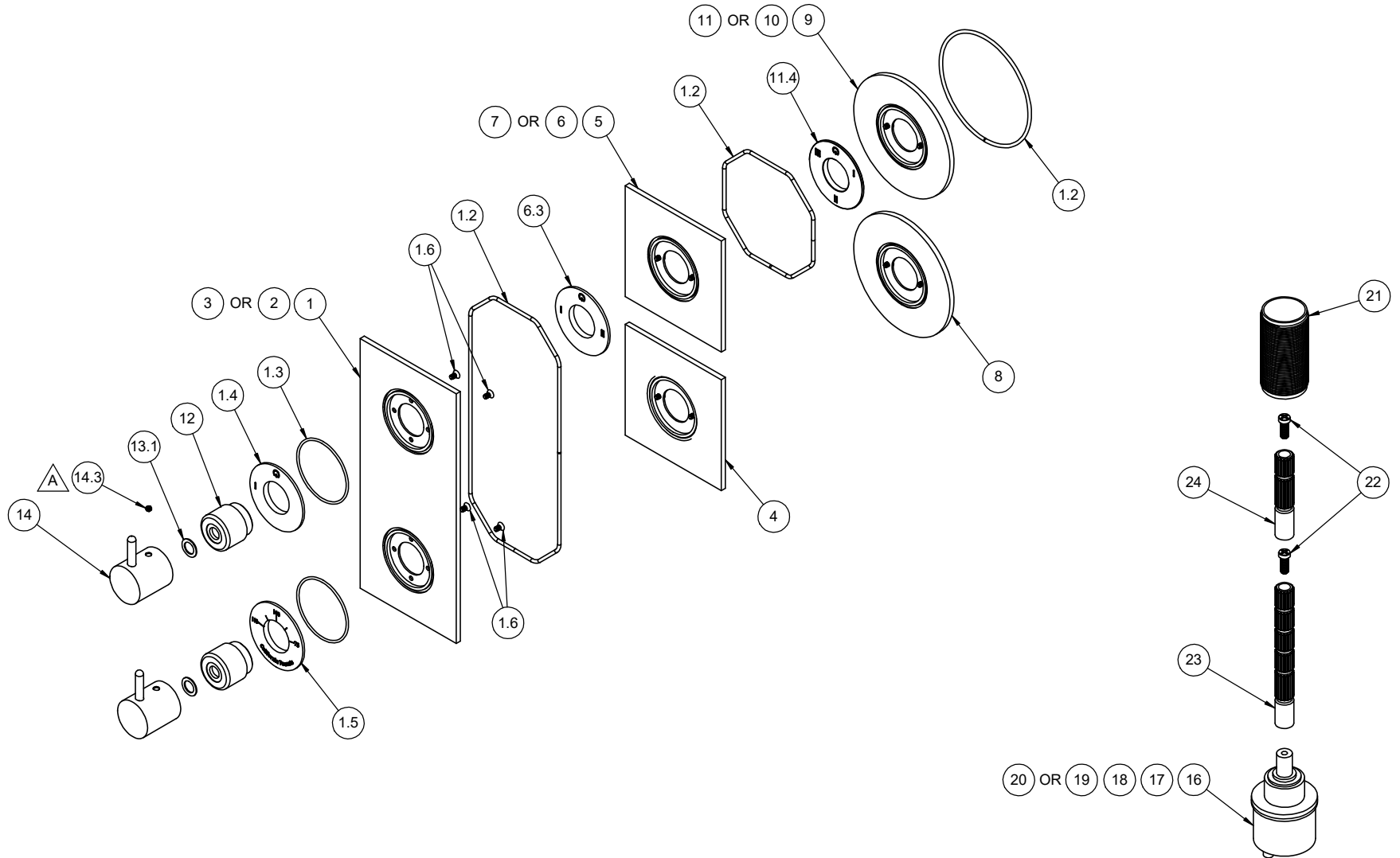


△ REQUIRES ITEM 15

TO-THRR1-62	TO-THFF1-62	TO-THF1-62
TO-THRR2-62	TO-THFF2-62	TO-THF2-62
TO-THRR2S-62	TO-THFF2S-62	TO-THF2S-62
TO-THRR3-62	TO-THFF3-62	TO-THF3-62
TO-THRR3S-62	TO-THFF3S-62	TO-THF3S-62



TO-THRR1-62 TO-THFF1-62 TO-THF1-62
 TO-THRR2-62 TO-THFF2-62 TO-THF2-62
 TO-THRR2S-62 TO-THFF2S-62 TO-THF2S-62
 TO-THRR3-62 TO-THFF3-62 TO-THF3-62
 TO-THRR3S-62 TO-THFF3S-62 TO-THF3S-62

To order spare parts add and/or replace as stated below:

SPD- prefix added to part number(s)
-ZZ replaced with finish code (see finish table)
-WW replaced with **-90** (light finish) or **-96** (dark finish)

Ex: **SPD-7-100463-PC** or **SPD-86030-96**

	ITEM	PART NO.	DESCRIPTION	QTY
for TO-THX1	16	880639-99	CART, Ø33 1 OUTLET DIVERter	1
for TO-THX2	17	880640-99	CART, Ø33 2 OUTLET DIVERter	1
for TO-THX3	18	880641-99	CART, Ø33 3 OUTLET DIVERter	1
for TO-THX2S	19	880657-99	CART, Ø33 2 OUTLET DIVERter - SHARED	1
for TO-THX3S	20	880658-99	CART, Ø33 3 OUTLET DIVERter - SHARED	1
	21	11527-ZZ	ALL THREAD, THERM 2.0 TRIM	1
	22	86078-90	SCREW, M4 X 0.7 X 10MM, w/Ø5.80 PHL PH HD SS	2
	23	880137-98	BROACH EXTENSION 3-1/4"(L) X 16T(M) X 20T(F)	1
	24	880663-98	BROACH EXTENSION 2"(L) X 16T(M) X 20T(F)	1

	ITEM	PART NO.	DESCRIPTION	QTY
for TO-THF1	1	7-100746-ZZ	ASM, THERM 2.0 FLATE PLATE, 1 OUTLET <i>(incl. 1.2, 1.3, 1.4, 1.5, 1.6)</i>	1
	1.2	87127-80	O-RING CORD 2.62 (.103") SOFT BUNA-N A50 <i>(Order quantity will be 23")</i>	1
	1.3	881487-99	O-RING Ø50.52 X 1.78 (-033) BUNA-N A70	2
	1.4	11519-ZZ	NOMENCLATURE, 2 HANDLE THERM, 1-WAY DIVERter	1
	1.5	11522-ZZ	NOMENCLATURE, 2 HANDLE THERM, TEMP	1
	1.6	86171-90	SCREW 6-32 X 1/4" PH FLT HD SS	4
for TO-THF2 & TO-THF2S	2	7-100747-ZZ	ASM, THERM 2.0 FLATE PLATE, 2 OUTLET <i>(incl. 1.2, 1.3, 1.5, 1.6, 6.3)</i>	1
for TO-THF3 & TO-THF3S	3	7-100748-ZZ	ASM, THERM 2.0 FLATE PLATE, 3 OUTLET <i>(incl. 1.2, 1.3, 1.5, 1.6, 11.4)</i>	1
for all TO-THFF	4	7-100772-ZZ	ASM, THERM 2.0 INDIV FLAT PLATE, TEMP <i>(incl. 1.2, 1.3, 1.5, 1.6)</i>	1
for TO-THFF1	5	7-100756-ZZ	ASM, THERM 2.0 INDIV FLAT PLATE, 1 OUTLET <i>(incl. 1.2, 1.3, 1.4, 1.6)</i>	1
for TO-THFF2 & TO-THFF2S	6	7-100757-ZZ	ASM, THERM 2.0 INDIV FLAT PLATE, 2 OUTLET <i>(incl. 1.2, 1.3, 1.6, 6.3)</i>	1
	6.3	11520-ZZ	NOMENCLATURE, 2 HANDLE THERM, 2-WAY DIVERter	1
for TO-THFF3 & TO-THFF3S	7	7-100758-ZZ	ASM, THERM 2.0 INDIV FLAT PLATE, 3 OUTLET <i>(incl. 1.2, 1.3, 1.6, 11.4)</i>	1
for all TO-THRR	8	7-100774-ZZ	ASM, THERM 2.0 INDIV ROUND PLATE, TEMP <i>(incl. 1.2, 1.3, 1.5, 1.6)</i>	1
for TO-THRR1	9	7-100766-ZZ	ASM, THERM 2.0 INDIV ROUND PLATE, 1 OUTLET <i>(incl. 1.2, 1.3, 1.4, 1.6)</i>	1
for TO-THRR2 & TO-THRR2S	10	7-100767-ZZ	ASM, THERM 2.0 INDIV ROUND PLATE, 2 OUTLET <i>(incl. 1.2, 1.3, 1.6, 6.3)</i>	1
for TO-THRR3 & TO-THRR3S	11	7-100768-ZZ	ASM, THERM 2.0 INDIV ROUND PLATE, 3 OUTLET <i>(incl. 1.2, 1.3, 1.6, 11.4)</i>	1
	11.4	11521-ZZ	NOMENCLATURE, 2 HANDLE THERM, 3-WAY DIVERter	1
	12	11517-ZZ	ESCUTCHEON, 2 HANDLE THERM, CONT	2
	13.1	87340-81	WSHR Ø.590" X Ø.390" X .030" BLK UHMW	2
	14	7-623179-ZZ	KIT, LEV HDL, 62 SERIES <i>(incl. 14.3)</i>	2
	14.3	86030-WW	SETSCREW 8-32 X 1/8 SCKT HD CUP PT SS	1
for ITEM 14.3	15	882042-99	KEY, ALLEN, 5/64", BLACK	1