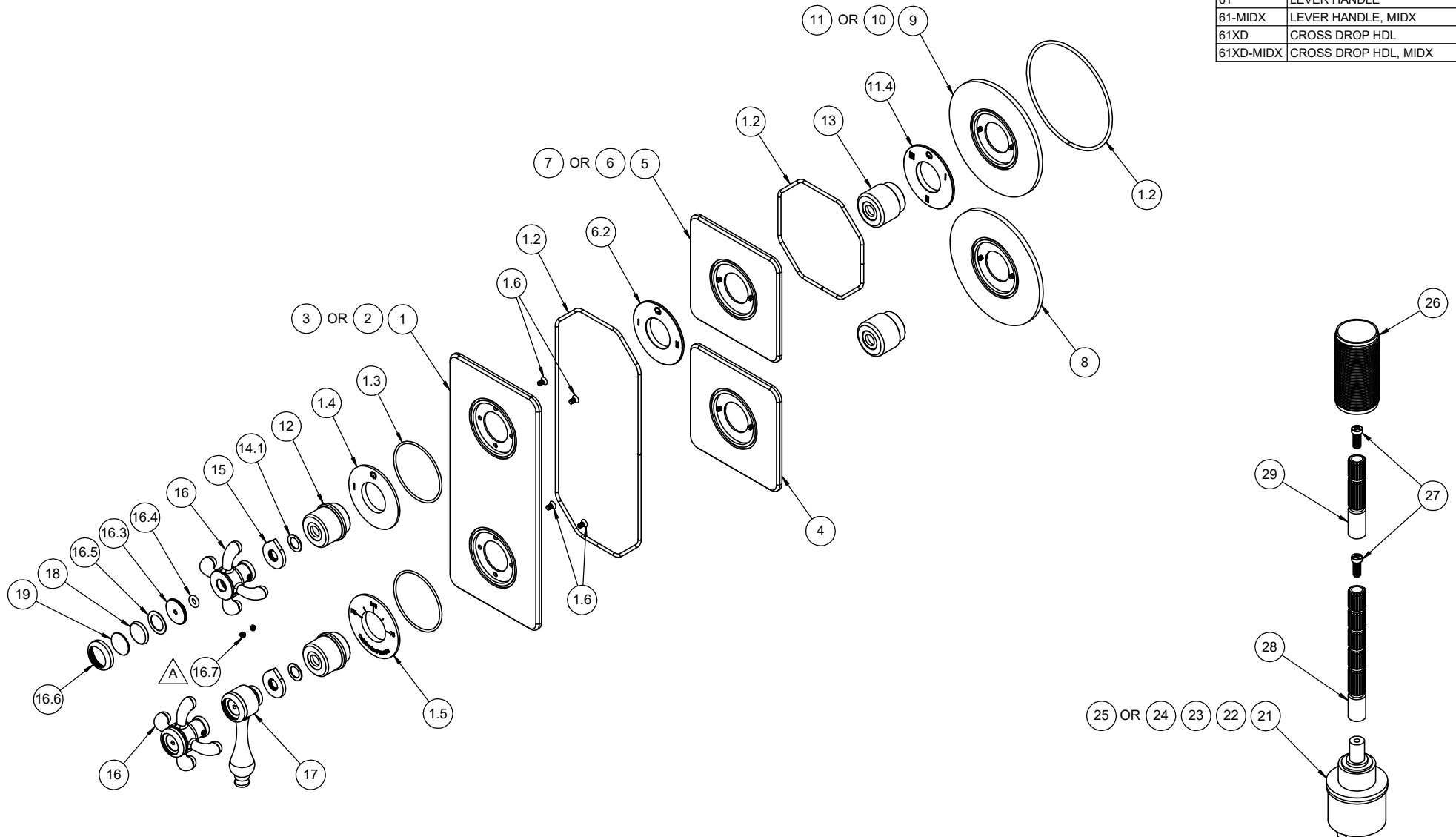


△ REQUIRES ITEM 20

TO-THRR1-XX	TO-THQQ1-XX	TO-THQ1-XX
TO-THRR2-XX	TO-THQQ2-XX	TO-THQ2-XX
TO-THRR2S-XX	TO-THQQ2S-XX	TO-THQ2S-XX
TO-THRR3-XX	TO-THQQ3-XX	TO-THQ3-XX
TO-THRR3S-XX	TO-THQQ3S-XX	TO-THQ3S-XX

-XX	HANDLE STYLE
61	LEVER HANDLE
61-MIDX	LEVER HANDLE, MIDX
61XD	CROSS DROP HDL
61XD-MIDX	CROSS DROP HDL, MIDX



TO-THRR1-XX TO-THQQ1-XX TO-THQ1-XX
 TO-THRR2-XX TO-THQQ2-XX TO-THQ2-XX
 TO-THRR2S-XX TO-THQQ2S-XX TO-THQ2S-XX
 TO-THRR3-XX TO-THQQ3-XX TO-THQ3-XX
 TO-THRR3S-XX TO-THQQ3S-XX TO-THQ3S-XX

-XX	HANDLE STYLE
61	LEVER HANDLE
61-MIDX	LEVER HANDLE, MIDX
61XD	CROSS DROP HDL
61XD-MIDX	CROSS DROP HDL, MIDX

To order spare parts add and/or replace as stated below:

SPD- prefix added to part number(s)

-ZZ replaced with finish code (see finish table)

-WW replaced with **-90** (light finish) or **-96** (dark finish)

Ex: **SPD-7-100463-PC** or **SPD-86030-96**

ITEM	PART NO.	DESCRIPTION	QTY
14.1	87340-81	WSHR Ø.590" X Ø.390" X .030" BLK UHMW	2
15	11523-ZZ	INDICATOR, 2 HANDLE THERM, DIAL	2
for 61XD Series	16	7-100223-ZZ	2
		ASM, DROOP BULB X-HDL W/ BEZEL (incl. 16.3, 16.4, 16.5, 16.6, 16.7)	
	16.3	10610-15B	1
		INSERT, THD, BEZEL HDL	
	16.4	87154-80	1
		O-RING Ø5.23 X 2.62 (-107) BUNA-N A70	
	16.5	87136-80	1
		WSHR Ø14.00 X Ø20.50 X 0.60MM	
	16.6	10575-ZZ	1
		BEZEL, MULTI HANDLE	
	16.7	86030-WW	2
		SETSCREW 8-32 X 1/8 SCKT HD CUP PT SS	
for 61 Series	17	7-100219-ZZ	1
		ASM, HANDLE, RD HUB & TRAD LVR W/BEZEL (incl. 16.3, 16.4, 16.5, 16.6, 16.7)	
for 61 & 61XD	18	471071-40	1
		BUTTON, INDEX, 47, BLANK, PORC (Ø20 X 5.5MM)	
for MIDX	19	471168-ZZ	1
		BUTTON, INDEX, METAL	
for ITEM 16.7	20	882042-99	1
		KEY, ALLEN, 5/64", BLACK	
for TO-THX1	21	880639-99	1
		CART, Ø33 1 OUTLET DIVERTER	
for TO-THX2	22	880640-99	1
		CART, Ø33 2 OUTLET DIVERTER	
for TO-THX3	23	880641-99	1
		CART, Ø33 3 OUTLET DIVERTER	
for TO-THX2S	24	880657-99	1
		CART, Ø33 2 OUTLET DIVERTER - SHARED	
for TO-THX3S	25	880658-99	1
		CART, Ø33 3 OUTLET DIVERTER - SHARED	
	26	11527-ZZ	1
		ALL THREAD, THERM 2.0 TRIM	
	27	86078-90	2
		SCREW, M4 X 0.7 X 10MM, w/Ø5.80 PHL PH HD SS	
	28	880137-98	1
		BROACH EXTENSION 3-1/4"(L) X 16T(M) X 20T(F)	
	29	880663-98	1
		BROACH EXTENSION 2"(L) X 16T(M) X 20T(F)	

ITEM	PART NO.	DESCRIPTION	QTY
for TO-THQ1	1	7-100751-ZZ	1
		ASM, THERM 2.0 QUAD PLATE, 1 OUTLET (incl. 1.2, 1.3, 1.4, 1.5, 1.6)	
	1.2	87127-80	1
		O-RING CORD 2.62 (.103") SOFT BUNA-N A50 (Order quantity will be 23")	
	1.3	881487-99	2
		O-RING Ø50.52 X 1.78 (-033) BUNA-N A70	
	1.4	11519-ZZ	1
		NOMENCLATURE, 2 HANDLE THERM, 1-WAY DIVERTER	
	1.5	11522-ZZ	1
		NOMENCLATURE, 2 HANDLE THERM, TEMP	
	1.6	86171-90	4
		SCREW 6-32 X 1/4" PH FLT HD SS	
	2	7-100752-ZZ	1
		ASM, THERM 2.0 QUAD PLATE, 2 OUTLET (incl. 1.2, 1.3, 1.5, 1.6, 6.2)	
	3	7-100753-ZZ	1
		ASM, THERM 2.0 QUAD PLATE, 3 OUTLET (incl. 1.2, 1.3, 1.5, 1.6, 11.4)	
	4	7-100773-ZZ	1
		ASM, THERM 2.0 INDIV QUAD PLATE, TEMP (incl. 1.2, 1.3, 1.5, 1.6)	
	5	7-100761-ZZ	1
		ASM, THERM 2.0 INDIV QUAD PLATE, 1 OUTLET (incl. 1.2, 1.3, 1.4, 1.6)	
	6	7-100762-ZZ	1
		ASM, THERM 2.0 INDIV QUAD PLATE, 2 OUTLET (incl. 1.2, 1.3, 1.6, 6.2)	
	6.2	11520-ZZ	1
		NOMENCLATURE, 2 HANDLE THERM, 2-WAY DIVERTER	
	7	7-100763-ZZ	1
		ASM, THERM 2.0 INDIV QUAD PLATE, 3 OUTLET (incl. 1.2, 1.3, 1.6, 11.4)	
	8	7-100774-ZZ	1
		ASM, THERM 2.0 INDIV ROUND PLATE, TEMP (incl. 1.2, 1.3, 1.5, 1.6)	
	9	7-100766-ZZ	1
		ASM, THERM 2.0 INDIV ROUND PLATE, 1 OUTLET (incl. 1.2, 1.3, 1.4, 1.6)	
	10	7-100767-ZZ	1
		ASM, THERM 2.0 INDIV ROUND PLATE, 2 OUTLET (incl. 1.2, 1.3, 1.6, 6.2)	
	11	7-100768-ZZ	1
		ASM, THERM 2.0 INDIV ROUND PLATE, 3 OUTLET (incl. 1.2, 1.3, 1.6, 11.4)	
	11.4	11521-ZZ	1
		NOMENCLATURE, 2 HANDLE THERM, 3-WAY DIVERTER	
	12	11518-ZZ	2
		ESCUTCHEON, 2 HANDLE THERM, TRANS	
	13	11517-ZZ	2
		ESCUTCHEON, 2 HANDLE THERM, CONT	