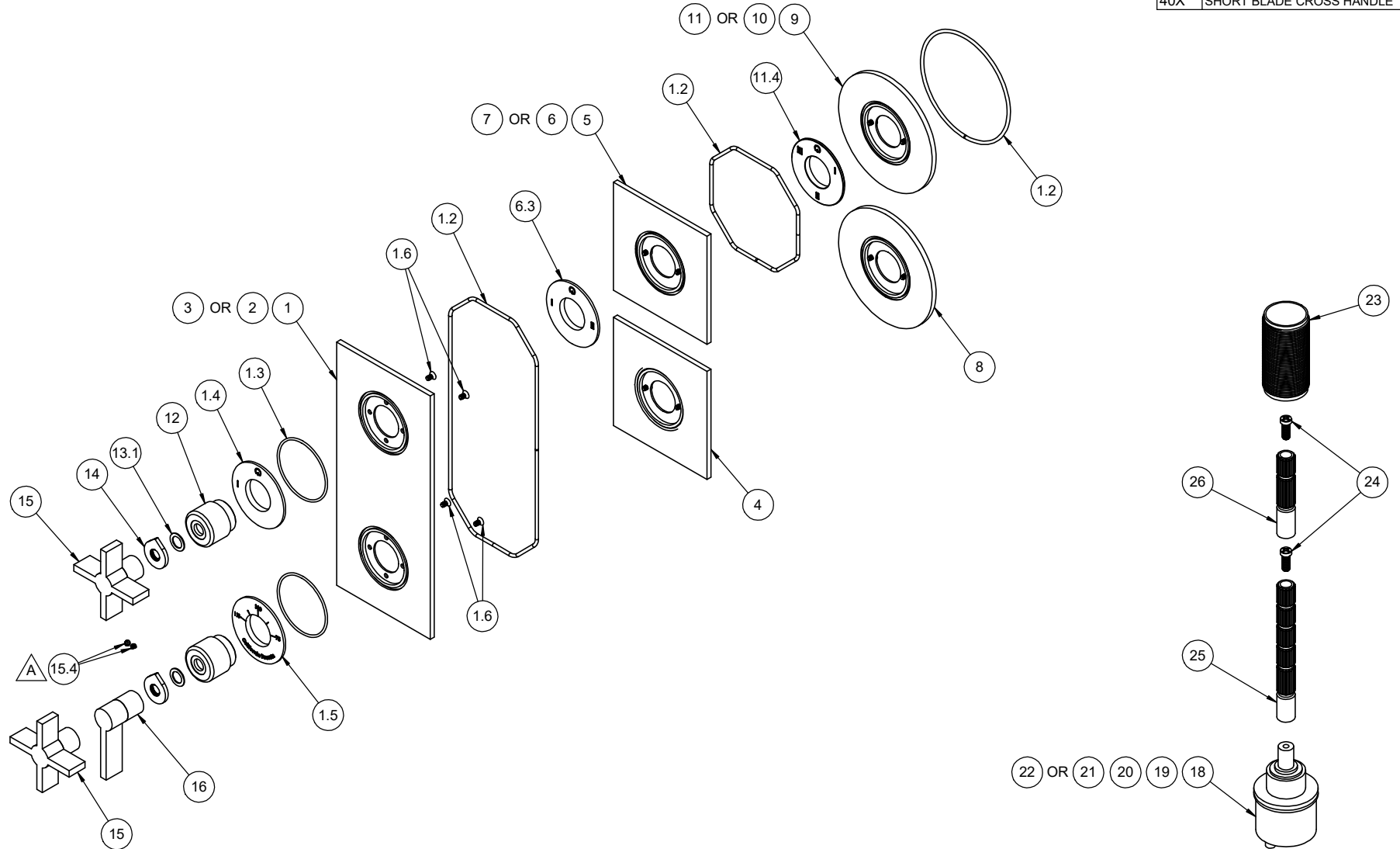


△ REQUIRES ITEM 17

| | | |
|--------------|--------------|-------------|
| TO-THRR1-XX | TO-THFF1-XX | TO-THF1-XX |
| TO-THRR2-XX | TO-THFF2-XX | TO-THF2-XX |
| TO-THRR2S-XX | TO-THFF2S-XX | TO-THF2S-XX |
| TO-THRR3-XX | TO-THFF3-XX | TO-THF3-XX |
| TO-THRR3S-XX | TO-THFF3S-XX | TO-THF3S-XX |

| -XX | HANDLE STYLE |
|-----|--------------------------|
| 40 | SHORT BLADE LEVER HANDLE |
| 40X | SHORT BLADE CROSS HANDLE |



TO-THRR1-XX TO-THFF1-XX TO-THF1-XX
 TO-THRR2-XX TO-THFF2-XX TO-THF2-XX
 TO-THRR2S-XX TO-THFF2S-XX TO-THF2S-XX
 TO-THRR3-XX TO-THFF3-XX TO-THF3-XX
 TO-THRR3S-XX TO-THFF3S-XX TO-THF3S-XX

| -XX | HANDLE STYLE |
|-----|--------------------------|
| 40 | SHORT BLADE LEVER HANDLE |
| 40X | SHORT BLADE CROSS HANDLE |

To order spare parts add and/or replace as stated below:

SPD- prefix added to part number(s)
-ZZ replaced with finish code (see finish table)
-WW replaced with **-90** (light finish) or **-96** (dark finish)

Ex: **SPD-7-100463-PC** or **SPD-86030-96**

| ITEM | PART NO. | DESCRIPTION | QTY |
|--------------------------|----------|--|-----|
| for TO-THF1 | 1 | 7-100746-ZZ ASM, THERM 2.0 FLATE PLATE, 1 OUTLET <i>(incl. 1.2, 1.3, 1.4, 1.5, 1.6)</i> | 1 |
| | 1.2 | 87127-80 O-RING CORD 2.62 (.103") SOFT BUNA-N A50 <i>(Order quantity will be 23")</i> | 1 |
| | 1.3 | 881487-99 O-RING Ø50.52 X 1.78 (-033) BUNA-N A70 | 2 |
| | 1.4 | 11519-ZZ NOMENCLATURE, 2 HANDLE THERM, 1-WAY DIVERter | 1 |
| | 1.5 | 11522-ZZ NOMENCLATURE, 2 HANDLE THERM, TEMP | 1 |
| | 1.6 | 86171-90 SCREW 6-32 X 1/4" PH FLT HD SS | 4 |
| for TO-THF2 & TO-THF2S | 2 | 7-100747-ZZ ASM, THERM 2.0 FLATE PLATE, 2 OUTLET <i>(incl. 1.2, 1.3, 1.5, 1.6, 6.3)</i> | 1 |
| | 3 | 7-100748-ZZ ASM, THERM 2.0 FLATE PLATE, 3 OUTLET <i>(incl. 1.2, 1.3, 1.5, 1.6, 11.4)</i> | 1 |
| for TO-THF3 & TO-THF3S | 4 | 7-100772-ZZ ASM, THERM 2.0 INDIV FLAT PLATE, TEMP <i>(incl. 1.2, 1.3, 1.5, 1.6)</i> | 1 |
| | 5 | 7-100756-ZZ ASM, THERM 2.0 INDIV FLAT PLATE, 1 OUTLET <i>(incl. 1.2, 1.3, 1.4, 1.6)</i> | 1 |
| for all TO-THFF | 6 | 7-100757-ZZ ASM, THERM 2.0 INDIV FLAT PLATE, 2 OUTLET <i>(incl. 1.2, 1.3, 1.6, 6.3)</i> | 1 |
| | 6.3 | 11520-ZZ NOMENCLATURE, 2 HANDLE THERM, 2-WAY DIVERter | 1 |
| for TO-THFF2 & TO-THFF2S | 7 | 7-100758-ZZ ASM, THERM 2.0 INDIV FLAT PLATE, 3 OUTLET <i>(incl. 1.2, 1.3, 1.6, 11.4)</i> | 1 |
| | 8 | 7-100774-ZZ ASM, THERM 2.0 INDIV ROUND PLATE, TEMP <i>(incl. 1.2, 1.3, 1.5, 1.6)</i> | 1 |
| for TO-THFF3 & TO-THFF3S | 9 | 7-100766-ZZ ASM, THERM 2.0 INDIV ROUND PLATE, 1 OUTLET <i>(incl. 1.2, 1.3, 1.4, 1.6)</i> | 1 |
| | 10 | 7-100767-ZZ ASM, THERM 2.0 INDIV ROUND PLATE, 2 OUTLET <i>(incl. 1.2, 1.3, 1.6, 6.3)</i> | 1 |
| for all TO-THRR | 11 | 7-100768-ZZ ASM, THERM 2.0 INDIV ROUND PLATE, 3 OUTLET <i>(incl. 1.2, 1.3, 1.6, 11.4)</i> | 1 |
| | 11.4 | 11521-ZZ NOMENCLATURE, 2 HANDLE THERM, 3-WAY DIVERter | 1 |
| for TO-THRR2 & TO-THRR2S | 12 | 11517-ZZ ESCUTCHEON, 2 HANDLE THERM, CONT | 2 |
| | 13.1 | 87340-81 WSHR Ø.590" X Ø.390" X .030" BLK UHMW | 2 |

| | ITEM | PART NO. | DESCRIPTION | QTY |
|----------------|------|-------------|---|-----|
| | 14 | 11523-ZZ | INDICATOR, 2 HANDLE THERM, DIAL | 2 |
| for 40X Series | 15 | 7-100656-ZZ | ASM, SHORT BLADE CROSS HDL <i>(incl. 15.4)</i> | 1 |
| | 15.4 | 86030-WW | SETScrew 8-32 X 1/8 SCKT HD CUP PT SS | 2 |
| for 40 Series | 16 | 7-100654-ZZ | ASM, SHORT BLADE LEVER HDL <i>(incl. 15.4)</i> | 1 |
| for ITEM 15.4 | 17 | 882042-99 | KEY, ALLEN, 5/64", BLACK | 1 |
| for TO-THX1 | 18 | 880639-99 | CART, Ø33 1 OUTLET DIVERter | 1 |
| for TO-THX2 | 19 | 880640-99 | CART, Ø33 2 OUTLET DIVERter | 1 |
| for TO-THX3 | 20 | 880641-99 | CART, Ø33 3 OUTLET DIVERter | 1 |
| for TO-THX2S | 21 | 880657-99 | CART, Ø33 2 OUTLET DIVERter - SHARED | 1 |
| for TO-THX3S | 22 | 880658-99 | CART, Ø33 3 OUTLET DIVERter - SHARED | 1 |
| | 23 | 11527-ZZ | ALL THREAD, THERM 2.0 TRIM | 1 |
| | 24 | 86078-90 | SCREW, M4 X 0.7 X 10MM, w/Ø5.80 PHL PH HD SS | 2 |
| | 25 | 880137-98 | BROACH EXTENSION 3-1/4"(L) X 16T(M) X 20T(F) | 1 |
| | 26 | 880663-98 | BROACH EXTENSION 2"(L) X 16T(M) X 20T(F) | 1 |