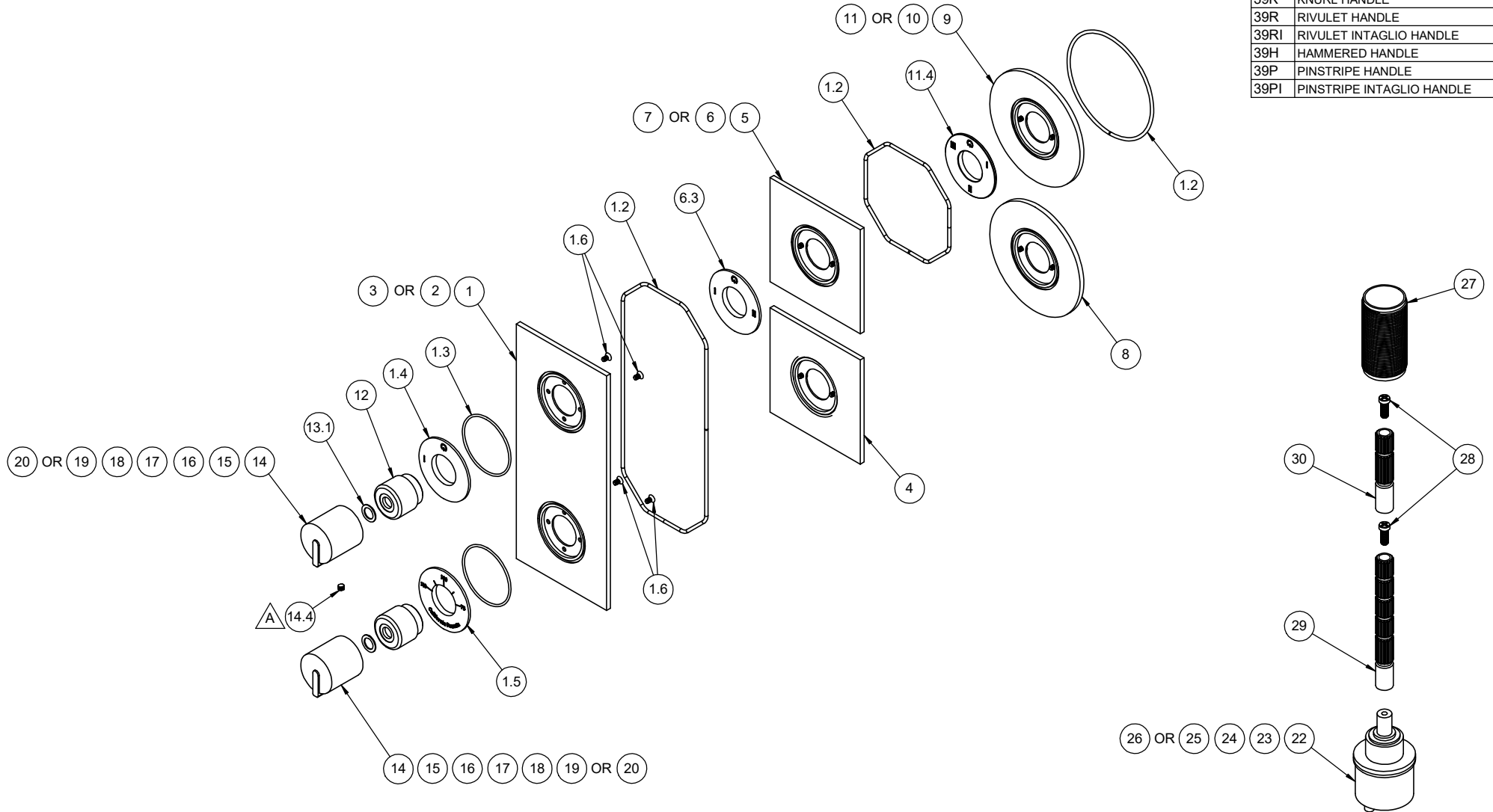


△ REQUIRES ITEM 21

TO-THRR1-XX	TO-THFF1-XX	TO-THF1-XX
TO-THRR2-XX	TO-THFF2-XX	TO-THF2-XX
TO-THRR2S-XX	TO-THFF2S-XX	TO-THF2S-XX
TO-THRR3-XX	TO-THFF3-XX	TO-THF3-XX
TO-THRR3S-XX	TO-THFF3S-XX	TO-THF3S-XX

-XX	HANDLE STYLE
39	SMOOTH SMALL CYL HANDLE
39K	KNURL HANDLE
39R	RIVULET HANDLE
39RI	RIVULET INTAGLIO HANDLE
39H	HAMMERED HANDLE
39P	PINSTRIPES HANDLE
39PI	PINSTRIPES INTAGLIO HANDLE



-XX	HANDLE STYLE
39	SMOOTH SMALL CYL HANDLE
39K	KNURL HANDLE
39R	RIVULET HANDLE
39RI	RIVULET INTAGLIO HANDLE
39H	HAMMERED HANDLE
39P	PINSTRIPED HANDLE
39PI	PINSTRIPED INTAGLIO HANDLE

TO-THRR1-XX	TO-THFF1-XX	TO-THF1-XX
TO-THRR2-XX	TO-THFF2-XX	TO-THF2-XX
TO-THRR2S-XX	TO-THFF2S-XX	TO-THF2S-XX
TO-THRR3-XX	TO-THFF3-XX	TO-THF3-XX
TO-THRR3S-XX	TO-THFF3S-XX	TO-THF3S-XX

To order spare parts add and/or replace as stated below:

**SPD-** prefix added to part number(s)  
**-ZZ** replaced with finish code (see finish table)  
**-WW** replaced with **-90** (light finish) or **-96** (dark finish)

Ex: **SPD-7-100463-PC** or **SPD-86030-96**

ITEM	PART NO.	DESCRIPTION	QTY
1	7-100746-ZZ	ASM, THERM 2.0 FLATE PLATE, 1 OUTLET <i>(incl. 1.2, 1.3, 1.4, 1.5, 1.6)</i>	1
1.2	87127-80	O-RING CORD 2.62 (.103") SOFT BUNA-N A50 <i>(Order quantity will be 23")</i>	1
1.3	881487-99	O-RING Ø50.52 X 1.78 (-033) BUNA-N A70	2
1.4	11519-ZZ	NOMENCLATURE, 2 HANDLE THERM, 1-WAY DIVERter	1
1.5	11522-ZZ	NOMENCLATURE, 2 HANDLE THERM, TEMP	1
1.6	86171-90	SCREW 6-32 X 1/4" PH FLT HD SS	4
2	7-100747-ZZ	ASM, THERM 2.0 FLATE PLATE, 2 OUTLET <i>(incl. 1.2, 1.3, 1.5, 1.6, 6.3)</i>	1
3	7-100748-ZZ	ASM, THERM 2.0 FLATE PLATE, 3 OUTLET <i>(incl. 1.2, 1.3, 1.5, 1.6, 11.4)</i>	1
4	7-100772-ZZ	ASM, THERM 2.0 INDIV FLAT PLATE, TEMP <i>(incl. 1.2, 1.3, 1.5, 1.6)</i>	1
5	7-100756-ZZ	ASM, THERM 2.0 INDIV FLAT PLATE, 1 OUTLET <i>(incl. 1.2, 1.3, 1.4, 1.6)</i>	1
6	7-100757-ZZ	ASM, THERM 2.0 INDIV FLAT PLATE, 2 OUTLET <i>(incl. 1.2, 1.3, 1.6, 6.3)</i>	1
6.3	11520-ZZ	NOMENCLATURE, 2 HANDLE THERM, 2-WAY DIVERter	1
7	7-100758-ZZ	ASM, THERM 2.0 INDIV FLAT PLATE, 3 OUTLET <i>(incl. 1.2, 1.3, 1.6, 11.4)</i>	1
8	7-100774-ZZ	ASM, THERM 2.0 INDIV ROUND PLATE, TEMP <i>(incl. 1.2, 1.3, 1.5, 1.6)</i>	1
9	7-100766-ZZ	ASM, THERM 2.0 INDIV ROUND PLATE, 1 OUTLET <i>(incl. 1.2, 1.3, 1.4, 1.6)</i>	1
10	7-100767-ZZ	ASM, THERM 2.0 INDIV ROUND PLATE, 2 OUTLET <i>(incl. 1.2, 1.3, 1.6, 6.3)</i>	1
11	7-100768-ZZ	ASM, THERM 2.0 INDIV ROUND PLATE, 3 OUTLET <i>(incl. 1.2, 1.3, 1.6, 11.4)</i>	1
11.4	11521-ZZ	NOMENCLATURE, 2 HANDLE THERM, 3-WAY DIVERter	1
12	11517-ZZ	ESCUTCHEON, 2 HANDLE THERM, CONT	2
13.1	87340-81	WSHR Ø.590" X Ø.390" X .030" BLK UHMW	2

	ITEM	PART NO.	DESCRIPTION	QTY
for 39 Series	14	7-100613-ZZ	ASM, SMOOTH SMALL CYL HDL <i>(incl. 14.4)</i>	2
	14.4	86047-90	SETScrew 10-24 X 3/16 SCKT HD CONE PT SS	1
for 39K Series	15	7-100615-ZZ	ASM, KNURL SMALL CYL HDL <i>(incl. 14.4)</i>	2
for 39R Series	16	7-100616-ZZ	ASM, RIVULET SMALL CYL HDL <i>(incl. 14.4)</i>	2
for 39RI Series	17	7-100616I-ZZ	ASM, RIVULET SMALL CYL HDL - INTAGLIO <i>(incl. 14.4)</i>	2
for 39H Series	18	7-100617-ZZ	ASM, HAMMERED SMALL CYL HDL <i>(incl. 14.4)</i>	2
for 39P Series	19	7-100618-ZZ	ASM, PINSTRIPED SMALL CYL HDL <i>(incl. 14.4)</i>	2
for 39PI Series	20	7-100618I-ZZ	ASM, PINSTRIPED SMALL CYL HDL - INTAGLIO <i>(incl. 14.4)</i>	2
for ITEM 14.4	21	882043-99	KEY, ALLEN, 3/32", BLACK	1
for TO-THX1	22	880639-99	CART, Ø33 1 OUTLET DIVERter	1
for TO-THX2	23	880640-99	CART, Ø33 2 OUTLET DIVERter	1
for TO-THX3	24	880641-99	CART, Ø33 3 OUTLET DIVERter	1
for TO-THX2S	25	880657-99	CART, Ø33 2 OUTLET DIVERter - SHARED	1
for TO-THX3S	26	880658-99	CART, Ø33 3 OUTLET DIVERter - SHARED	1
	27	11527-ZZ	ALL THREAD, THERM 2.0 TRIM	1
	28	86078-90	SCREW, M4 X 0.7 X 10MM, w/Ø5.80 PHL PH HD SS	2
	29	880137-98	BROACH EXTENSION 3-1/4"(L) X 16T(M) X 20T(F)	1
	30	880663-98	BROACH EXTENSION 2"(L) X 16T(M) X 20T(F)	1

for TO-THF1

for TO-THF2 & TO-THF2S

for TO-THF3 & TO-THF3S

for all TO-THFF

for TO-THFF1

for TO-THFF2 & TO-THFF2S

for TO-THFF3 & TO-THFF3S

for all TO-THRR

for TO-THRR1

for TO-THRR2 & TO-THRR2S

for TO-THRR3 & TO-THRR3S