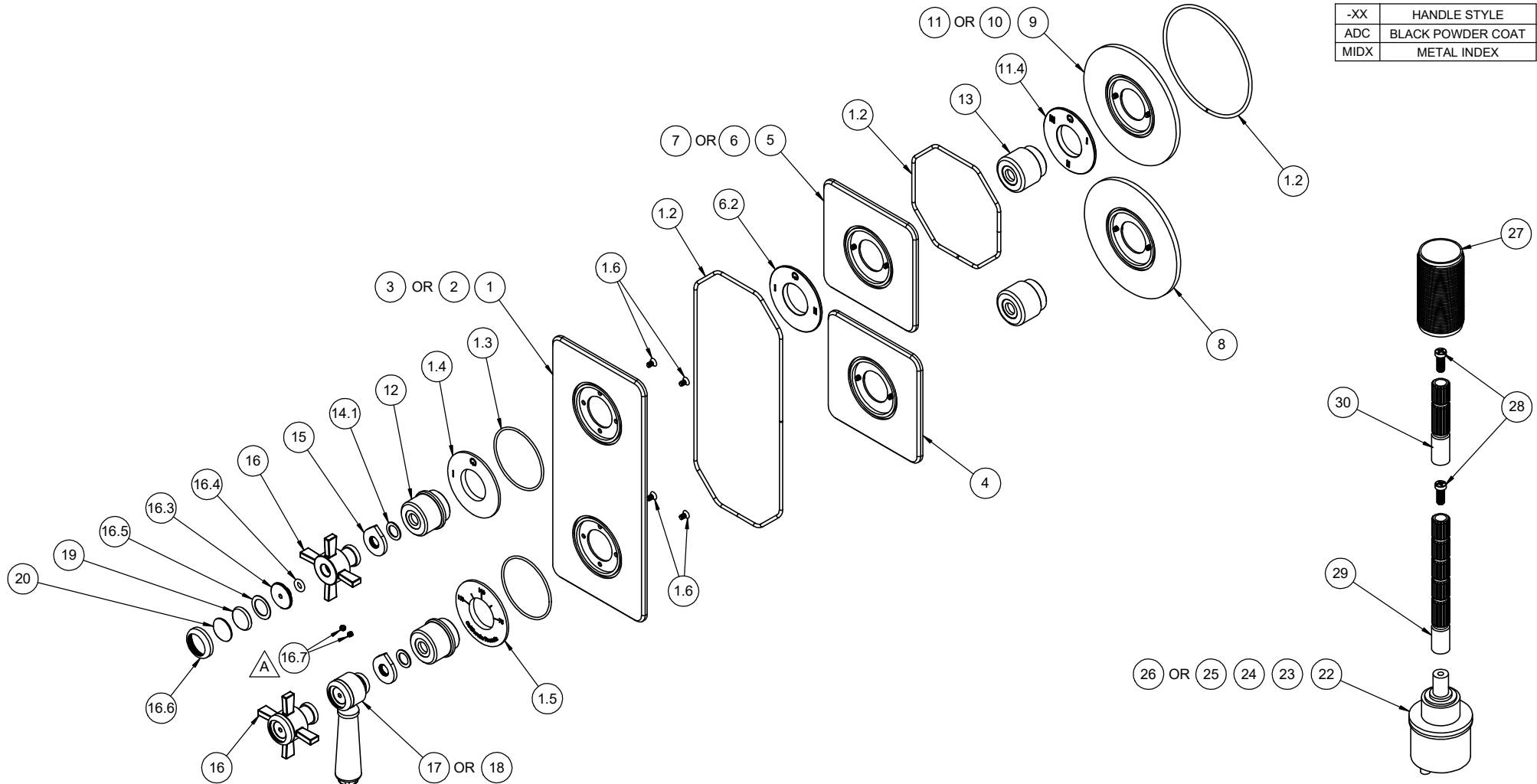


△ REQUIRES ITEM 21

- |                 |                |                |                   |                  |                  |
|-----------------|----------------|----------------|-------------------|------------------|------------------|
| TO-THRR1-35     | TO-THQ1-35     | TO-THQ1-35     | TO-THRR1-34       | TO-THQ1-34       | TO-THQ1-34       |
| TO-THRR1-35-XX  | TO-THQ1-35-XX  | TO-THQ1-35-XX  | TO-THRR1-34-MIDX  | TO-THQ1-34-MIDX  | TO-THQ1-34-MIDX  |
| TO-THRR2-35     | TO-THQ2-35     | TO-THQ2-35     | TO-THRR2-34       | TO-THQ2-34       | TO-THQ2-34       |
| TO-THRR2-35-XX  | TO-THQ2-35-XX  | TO-THQ2-35-XX  | TO-THRR2-34-MIDX  | TO-THQ2-34-MIDX  | TO-THQ2-34-MIDX  |
| TO-THRR2S-35    | TO-THQ2S-35    | TO-THQ2S-35    | TO-THRR2S-34      | TO-THQ2S-34      | TO-THQ2S-34      |
| TO-THRR2S-35-XX | TO-THQ2S-35-XX | TO-THQ2S-35-XX | TO-THRR2S-34-MIDX | TO-THQ2S-34-MIDX | TO-THQ2S-34-MIDX |
| TO-THRR3-35     | TO-THQ3-35     | TO-THQ3-35     | TO-THRR3-34       | TO-THQ3-34       | TO-THQ3-34       |
| TO-THRR3-35-XX  | TO-THQ3-35-XX  | TO-THQ3-35-XX  | TO-THRR3-34-MIDX  | TO-THQ3-34-MIDX  | TO-THQ3-34-MIDX  |
| TO-THRR3S-35    | TO-THQ3S-35    | TO-THQ3S-35    | TO-THRR3S-34      | TO-THQ3S-34      | TO-THQ3S-34      |
| TO-THRR3S-35-XX | TO-THQ3S-35-XX | TO-THQ3S-35-XX | TO-THRR3S-34-MIDX | TO-THQ3S-34-MIDX | TO-THQ3S-34-MIDX |

-XX	HANDLE STYLE
ADC	BLACK POWDER COAT
MIDX	METAL INDEX



-XX	HANDLE STYLE
ADC	BLACK POWDER COAT
MIDX	METAL INDEX

TO-THRR1-35	TO-THQ1-35	TO-THRR1-34	TO-THQ1-34
TO-THRR1-35-XX	TO-THQ1-35-XX	TO-THRR1-34-MIDX	TO-THQ1-34-MIDX
TO-THRR2-35	TO-THQ2-35	TO-THRR2-34	TO-THQ2-34
TO-THRR2-35-XX	TO-THQ2-35-XX	TO-THRR2-34-MIDX	TO-THQ2-34-MIDX
TO-THRR2S-35	TO-THQ2S-35	TO-THRR2S-34	TO-THQ2S-34
TO-THRR2S-35-XX	TO-THQ2S-35-XX	TO-THRR2S-34-MIDX	TO-THQ2S-34-MIDX
TO-THRR3-35	TO-THQ3-35	TO-THRR3-34	TO-THQ3-34
TO-THRR3-35-XX	TO-THQ3-35-XX	TO-THRR3-34-MIDX	TO-THQ3-34-MIDX
TO-THRR3S-35	TO-THQ3S-35	TO-THRR3S-34	TO-THQ3S-34
TO-THRR3S-35-XX	TO-THQ3S-35-XX	TO-THRR3S-34-MIDX	TO-THQ3S-34-MIDX

	ITEM	PART NO.	DESCRIPTION	QTY
for all TO-THRR	13	11517-ZZ	ESCUTCHEON, 2 HANDLE THERM, CONT	2
	14.1	87340-81	WSHR Ø.590" X Ø.390" X .030" BLK UHMW	2
	15	11523-ZZ	INDICATOR, 2 HANDLE THERM, DIAL	2
for 34 & 35 Series	16	7-100213-ZZ	ASM, THIN BLADE X-HDL W/BEZEL <i>(incl. 16.3, 16.4, 16.5, 16.6, 16.7)</i>	1
	16.3	10610-15B	INSERT, THD, BEZEL HDL	1
	16.4	87154-80	O-RING Ø5.23 X 2.62 (-107) BUNA-N A70	1
	16.5	87136-80	WSHR Ø14.00 X Ø20.50 X 0.60MM	1
	16.6	10575-ZZ	BEZEL, MULTI HANDLE	1
	16.7	86030-WW	SETScrew 8-32 X 1/8 SCKT HD CUP PT SS	2
for 35 Series	17	7-100218-ZZ	ASM, HANDLE, RD HUB W/SMTH PORC INSERT W/BEZEL <i>(incl. 16.3, 16.4, 16.5, 16.6, 16.7)</i>	1
for 35-ADC Series	18	7-100218-ADC-ZZ	ASM, HANDLE, RD HUB W/MBLK PORC INSERT W/BEZEL <i>(incl. 16.3, 16.4, 16.5, 16.6, 16.7)</i>	1
for 34 & 35 Series	19	471071-40	BUTTON, INDEX, 47, BLANK, PORC (Ø20 X 5.5MM)	1
for MIDX Series	20	471168-ZZ	BUTTON, INDEX, METAL	1
for ITEM 16.7	21	882042-99	KEY, ALLEN, 5/64", BLACK	1
for TO-THX1	22	880639-99	CART, Ø33 1 OUTLET DIVERter	1
for TO-THX2	23	880640-99	CART, Ø33 2 OUTLET DIVERter	1
for TO-THX3	24	880641-99	CART, Ø33 3 OUTLET DIVERter	1
for TO-THX2S	25	880657-99	CART, Ø33 2 OUTLET DIVERter - SHARED	1
for TO-THX3S	26	880658-99	CART, Ø33 3 OUTLET DIVERter - SHARED	1
	27	11527-ZZ	ALL THREAD, THERM 2.0 TRIM	1
	28	86078-90	SCREW, M4 X 0.7 X 10MM, w/Ø5.80 PHL PH HD SS	2
	29	880137-98	BROACH EXTENSION 3-1/4"(L) X 16T(M) X 20T(F)	1
	30	880663-98	BROACH EXTENSION 2"(L) X 16T(M) X 20T(F)	1

To order spare parts add and/or replace as stated below:

**SPD**- prefix added to part number(s)  
**-ZZ** replaced with finish code (see finish table)  
**-WW** replaced with **-90** (light finish) or **-96** (dark finish)

Ex: **SPD-7-100463-PC** or **SPD-86030-96**

	ITEM	PART NO.	DESCRIPTION	QTY
for TO-THQ1	1	7-100751-ZZ	ASM, THERM 2.0 QUAD PLATE, 1 OUTLET <i>(incl. 1.2, 1.3, 1.4, 1.5, 1.6)</i>	1
	1.2	87127-80	O-RING CORD 2.62 (.103") SOFT BUNA-N A50 <i>(Order quantity will be 23")</i>	1
	1.3	881487-99	O-RING Ø50.52 X 1.78 (-033) BUNA-N A70	2
	1.4	11519-ZZ	NOMENCLATURE, 2 HANDLE THERM, 1-WAY DIVERter	1
	1.5	11522-ZZ	NOMENCLATURE, 2 HANDLE THERM, TEMP	1
	1.6	86171-90	SCREW 6-32 X 1/4" PH FLT HD SS	4
for TO-THQ2 & TO-THQ2S	2	7-100752-ZZ	ASM, THERM 2.0 QUAD PLATE, 2 OUTLET <i>(incl. 1.2, 1.3, 1.5, 1.6, 6.2)</i>	1
for TO-THQ3 & TO-THQ3S	3	7-100753-ZZ	ASM, THERM 2.0 QUAD PLATE, 3 OUTLET <i>(incl. 1.2, 1.3, 1.5, 1.6, 11.4)</i>	1
for all TO-THQQ	4	7-100773-ZZ	ASM, THERM 2.0 INDIV QUAD PLATE, TEMP <i>(incl. 1.2, 1.3, 1.5, 1.6)</i>	1
for TO-THQQ1	5	7-100761-ZZ	ASM, THERM 2.0 INDIV QUAD PLATE, 1 OUTLET <i>(incl. 1.2, 1.3, 1.4, 1.6)</i>	1
for TO-THQQ2 & TO-THQQ2S	6	7-100762-ZZ	ASM, THERM 2.0 INDIV QUAD PLATE, 2 OUTLET <i>(incl. 1.2, 1.3, 1.6, 6.2)</i>	1
	6.2	11520-ZZ	NOMENCLATURE, 2 HANDLE THERM, 2-WAY DIVERter	1
for TO-THQQ3 & TO-THQQ3S	7	7-100763-ZZ	ASM, THERM 2.0 INDIV QUAD PLATE, 3 OUTLET <i>(incl. 1.2, 1.3, 1.6, 11.4)</i>	1
for all TO-THRR	8	7-100774-ZZ	ASM, THERM 2.0 INDIV ROUND PLATE, TEMP <i>(incl. 1.2, 1.3, 1.5, 1.6)</i>	1
for TO-THRR1	9	7-100766-ZZ	ASM, THERM 2.0 INDIV ROUND PLATE, 1 OUTLET <i>(incl. 1.2, 1.3, 1.4, 1.6)</i>	1
for TO-THRR2 & TO-THRR2S	10	7-100767-ZZ	ASM, THERM 2.0 INDIV ROUND PLATE, 2 OUTLET <i>(incl. 1.2, 1.3, 1.6, 6.2)</i>	1
for TO-THRR3 & TO-THRR3S	11	7-100768-ZZ	ASM, THERM 2.0 INDIV ROUND PLATE, 3 OUTLET <i>(incl. 1.2, 1.3, 1.6, 11.4)</i>	1
	11.4	11521-ZZ	NOMENCLATURE, 2 HANDLE THERM, 3-WAY DIVERter	1
for all TO-THQ & TO-THQQ	12	11518-ZZ	ESCUTCHEON, 2 HANDLE THERM, TRANS	2