



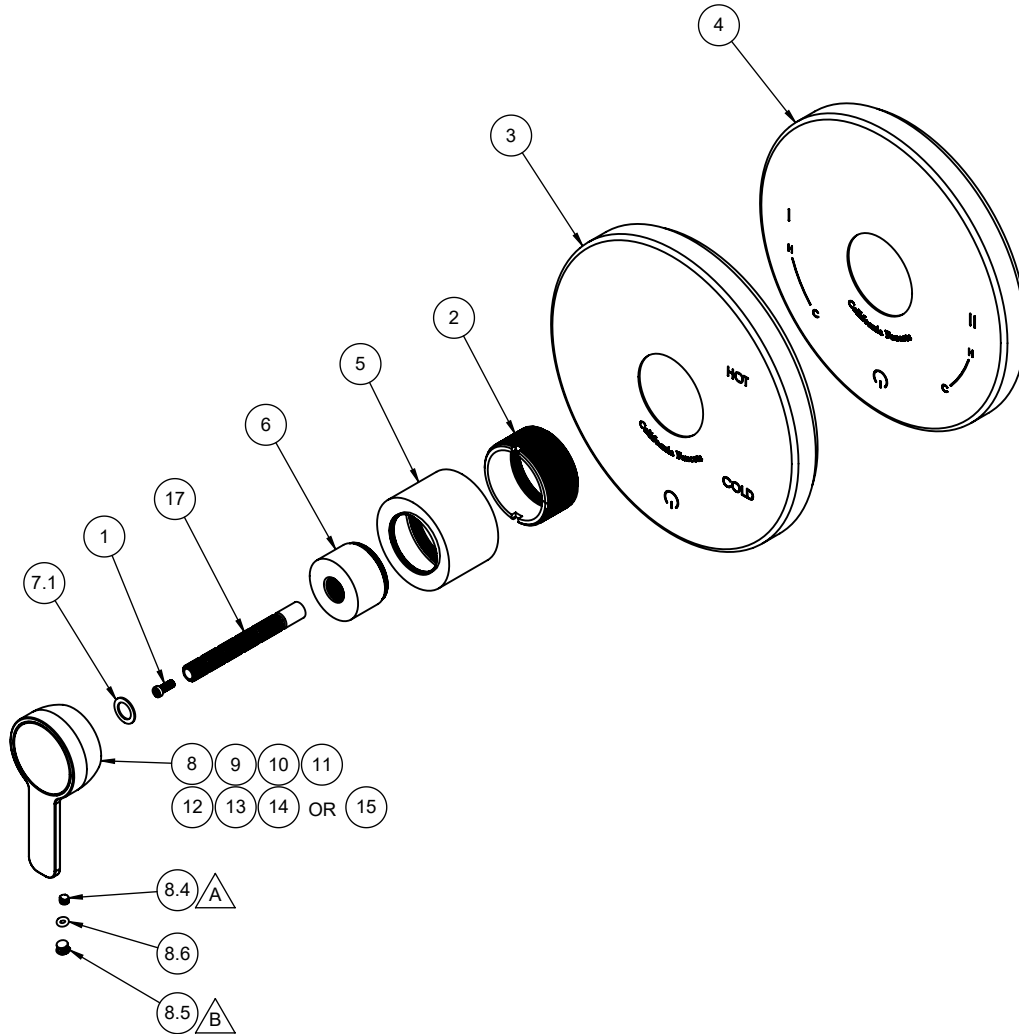


-  REQUIRES ITEM  16
-  REQUIRES ITEM  8.6

- | | |
|----------------|---------------|
| TO-PB2L-87 | TO-PBL-87 |
| TO-PB2L-87-BG | TO-PBL-87-BG |
| TO-PB2L-87-BKS | TO-PBL-87-BKS |
| TO-PB2L-87-WS | TO-PBL-87-WS |
| TO-PB2L-87-RS | TO-PBL-87-RS |
| TO-PB2L-87-GS | TO-PBL-87-GS |
| TO-PB2L-87-BS | TO-PBL-87-BS |
| TO-PB2L-87-TES | TO-PBL-87-TES |



To order spare parts add and/or replace as stated below:

SPD- prefix added to part number(s)
-ZZ replaced with finish code (see finish table)
-WW replaced with **-90** (light finish) or **-96** (dark finish)

Ex: **SPD-7-100463-PC** or **SPD-86030-96**

ITEM	PART NO.	DESCRIPTION	QTY	
1	86078-90	SCREW, M4 X 0.7 X 10MM, w/Ø5.80 PHL PH HD SS	1	
2	10292-98	BUSHING, PB G2	1	
for TO-PBL	3	7-100106-ZZ	ASM, CONT PB PLATE & GASKET	1
for TO-PB2L	4	7-100547-ZZ	ASM, CONT PB2 PLATE & GASKET	1
	5	10294-ZZ	ESCUTCHEON, CONT, PB G2	1
	6	571380-ZZ	ESCUTCHEON, 57, SERIES	1
	7.1	87340-81	WSHR Ø.590" X Ø.390" X .030" BLK UHMW	1
for 87 Series	8	7-100727-ZZ	ASM, HANDLE, ART DECO LEVER <i>(incl. 8.4, 8.5, 8.6)</i>	1
	8.4	86047-90	SETSCREW 10-24 X 3/16 SCKT HD CONE PT SS	1
	8.5	10444-ZZ	CAP, HANDLE SCRW	1
	8.6	87321-80	O-RING Ø2.80 X 1.90 (NA) BUNA-N A70	1
for 87-BG Series	9	7-100727-BG-ZZ	ASM, HANDLE, ART DECO LEVER, BLACK GLASS <i>(incl. 8.4, 8.5, 8.6)</i>	1
for 87-BKS Series	10	7-100727-BKS-ZZ	ASM, HANDLE, ART DECO LEVER, BLACK MARBLE <i>(incl. 8.4, 8.5, 8.6)</i>	1
for 87-WS Series	11	7-100727-WS-ZZ	ASM, HANDLE, ART DECO LEVER, WHITE MARBLE <i>(incl. 8.4, 8.5, 8.6)</i>	1
for 87-RS Series	12	7-100727-RS-ZZ	ASM, HANDLE, ART DECO LEVER, RED JASPER <i>(incl. 8.4, 8.5, 8.6)</i>	1
for 87-GS Series	13	7-100727-GS-ZZ	ASM, HANDLE, ART DECO LEVER, GREEN AVENTURINE <i>(incl. 8.4, 8.5, 8.6)</i>	1
for 87-BS Series	14	7-100727-BS-ZZ	ASM, HANDLE, ART DECO LEVER, BLUE SODALITE <i>(incl. 8.4, 8.5, 8.6)</i>	1
for 87-TES Series	15	7-100727-TES-ZZ	ASM, HANDLE, ART DECO LEVER, TIGER EYE <i>(incl. 8.4, 8.5, 8.6)</i>	1
for ITEM 8.4	16	882043-99	KEY, ALLEN, 3/32", BLACK	1
	17	880137-98	BROACH EXTENSION 3-1/4"(L) X 16T(M) X 20T(F)	1