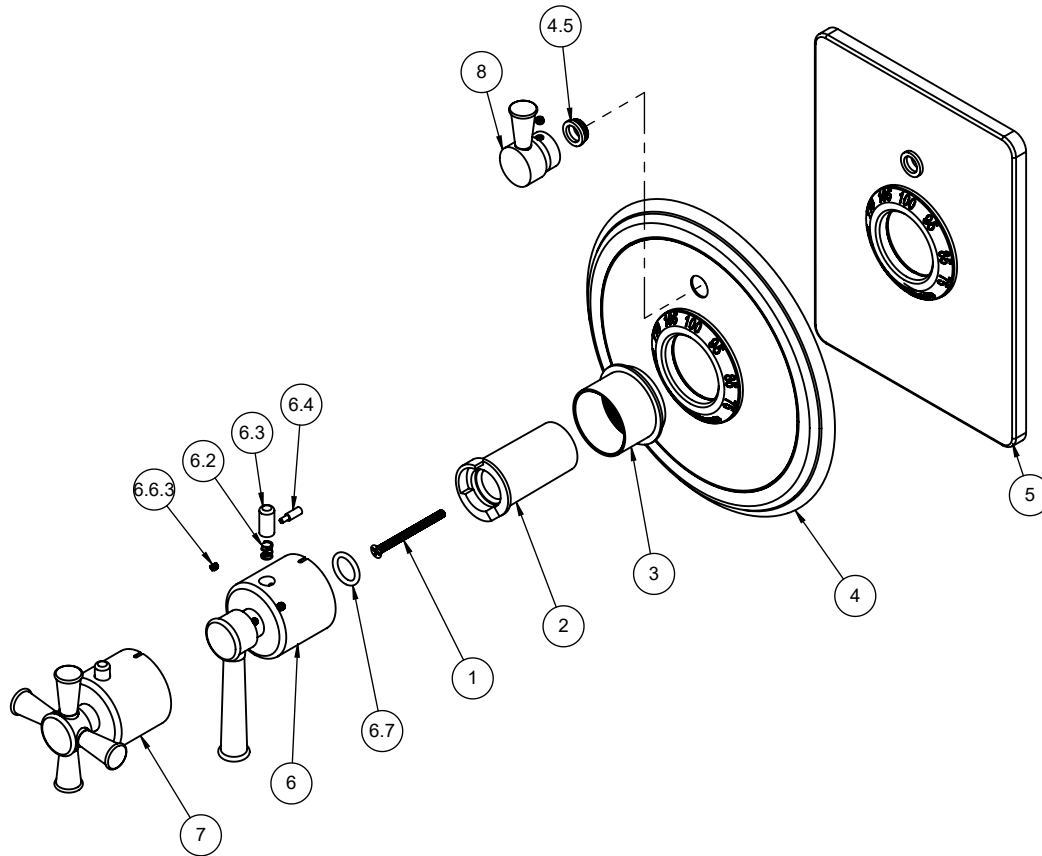


TO-TH1L-48  
TO-TH1L-48X  
TO-THC1L-48  
TO-THC1L-48X



To order spare parts add and/or replace as stated below:

**SPD-** prefix added to part number(s)  
**-ZZ** replaced with finish code (see finish table)  
**-WW** replaced with **-90** (light finish) or **-96** (dark finish)

Ex: **SPD-7-100463-PC** or **SPD-86030-96**

ITEM	PART NO.	DESCRIPTION	QTY	
1	86255-90	SCREW M4 X 0.7 X 50MM PH FLT HD SS	1	
2	10092-81	STOP, THERM TEMP, SHORT	1	
3	10090-ZZ	SLEEVE, THERMO MOUNTING	1	
for TO-TH1L	4	7-100044-ZZ	ASM, SHWRPLATE, TRAD RD, THERM W/1 VC (incl. 4.5)	1
	4.5	223467-99	NYLON BUSHING FOR PBS FACEPLATE	1
for TO-THC1L	5	7-100047-ZZ	ASM, SHOWERPLATE, CONT SQ, THERM W/1VC (incl. 4.5)	1
for 48 Series	6	TH-H-48-ZZ	THERM HANDLE KIT (incl. 6.2, 6.3, 6.4, 6.6.3, 6.7)	1
	6.2	10098-90	SPRING, Ø.24 X .312 LG, 1.4 LB/IN	1
	6.3	10093-81	BUTTON, BLACK THERM	1
	6.4	10062-98	PIN, THERMO BONNET	1
	6.6.3	86030-WW	SETSCREW 8-32 X 1/8 SCKT HD CUP PT SS	2
	6.7	87222-80	O-RING Ø13.94 X 2.62 (-113) EPDM A70 (NSF61-12 & WRAS)	1
for 48X Series	7	TH-H-48X-ZZ	THERM HANDLE KIT (incl. 6.2, 6.3, 6.4, 6.6.3, 6.7)	1
	8	7-100177-ZZ	ASM, THERM VC - TRAD W/SMTH & CAP (incl. 6.6.3)	1
for ITEM 6.6.3	9	882042-99	KEY, ALLEN, 5/64", BLACK	1