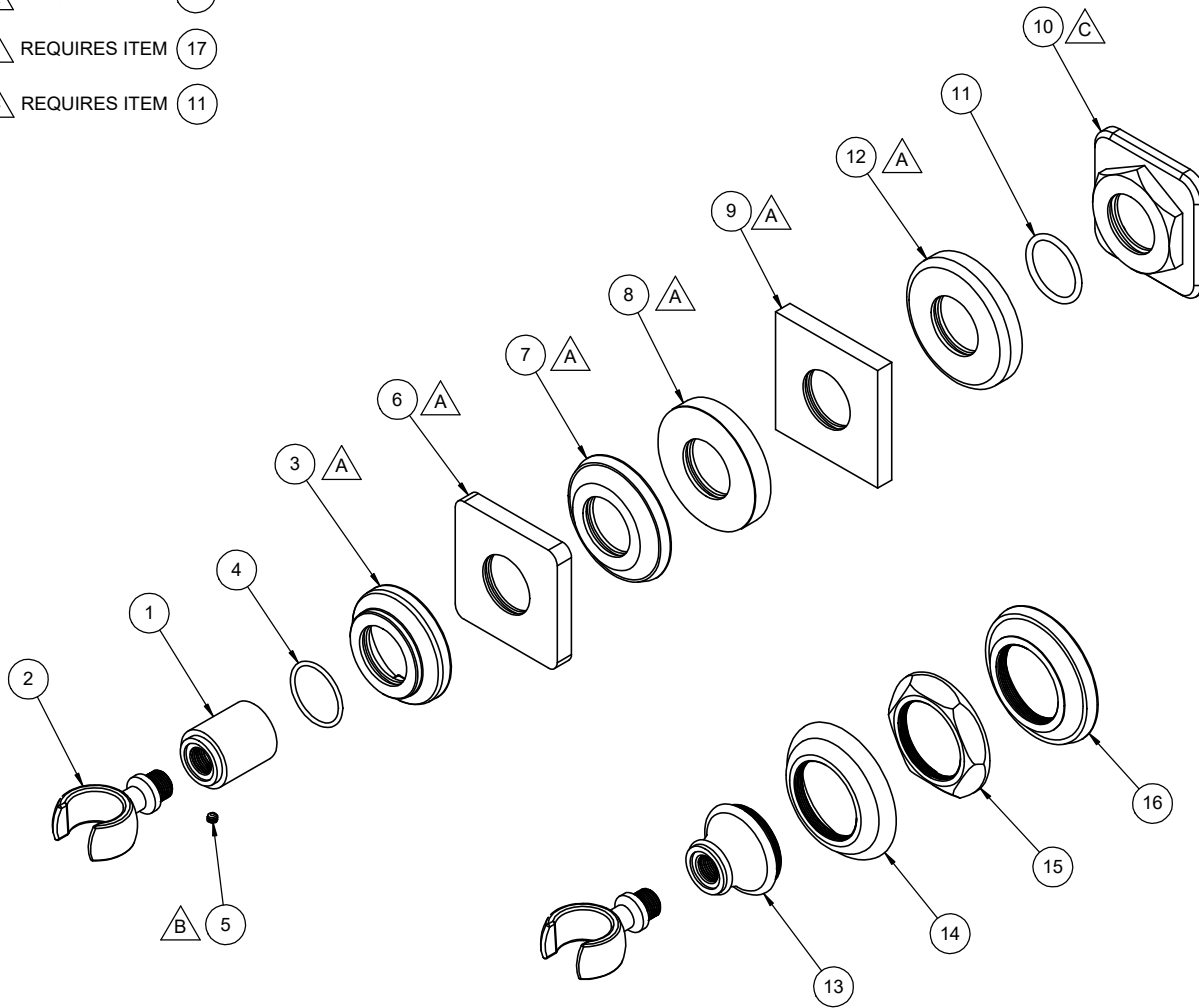


- △ A REQUIRES ITEM (4)
- △ B REQUIRES ITEM (17)
- △ C REQUIRES ITEM (11)



- SH-20-37
- SH-20-42
- SH-20-45
- SH-20-47
- SH-20-48
- SH-20-65
- SH-20-77
- SH-20-85
- SH-20-87
- SH-20-C1

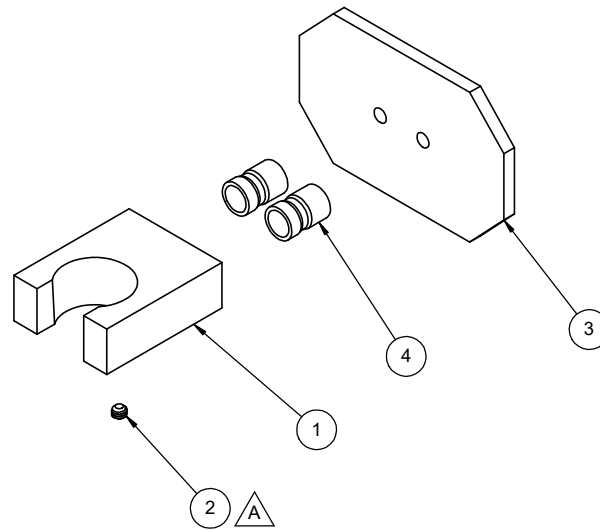
To order spare parts add and/or replace as stated below:

SPD- prefix added to part number(s)
-ZZ replaced with finish code (see finish table)
-WW replaced with **-90** (light finish) or **-96** (dark finish)

Ex: **SPD-7-100463-PC** or **SPD-86030-96**

ITEM	PART NO.	DESCRIPTION	QTY	
1	50334-ZZ	BASE, HOOK, CONT HAND SHOWER	1	
2	50333-ZZ	HOOK, HDSHWR	1	
for 87 Series	3	11564-ZZ	BASE RING, ART DECO WALL SPOUT	1
	4	87204-80	O-RING Ø25.12 X 1.78 (-022) EPDM A70 (NSF-61 & WRAS)	1
	5	86030-WW	SETSCREW 8-32 X 1/8 SCKT HD CUP PT SS	1
for 37 Series	6	11357-ZZ	SHOWER BRACKET BASE RING, RNDSD SQ	1
for 45 Series	7	51206-ZZ	BASE RING, SC ROUND, 26.4MM ID	1
for 65 Series	8	50903-ZZ	BASE RING, RD, SWIVEL HNDSHWR	1
for 77 Series	9	50902-ZZ	BASE RING, SQ, SWIVEL HNDSHWR	1
for 85 Series	10	10981-ZZ	BASE RING, QUAD W/ HEX & Ø26.4MM THRU HOLE	1
	11	87202-80	O-RING Ø25.07 X 2.62 (-120) BUNA-N A70 (NSF-61-12 & WRAS)	1
for C1 Series	12	11009-ZZ	RING, Ø26.4MM ID BASE W/ ID GROOVE, R3.0MM	1
	13	50335-ZZ	BASE, HOOK, TRAD HAND SHOWER	1
for 42 Series	14	11121-ZZ	BASE RING, TRAD, Ø59.5 W/ 1-3/8-28 THD	1
for 47 Series	15	10415-ZZ	BASE RING, HEX	1
for 48 Series	16	10363-ZZ	RING, BASE, TRAD	1
for ITEM 5	17	882042-99	KEY, ALLEN, 5/64", BLACK	1

△ REQUIRES ITEM 5



To order spare parts add and/or replace as stated below:

SPD- prefix added to part number(s)
-ZZ replaced with finish code (see finish table)
-WW replaced with **-90** (light finish) or **-96** (dark finish)

Ex: **SPD-7-100463-PC** or **SPD-86030-96**

ITEM	PART NO.	DESCRIPTION	QTY	
1	50390-ZZ	HOLDER, SQ. HS	1	
2	86103-WW	SETSCREW M4 X 0.7 X 3.5MM SCKT HD CONE PT SS	1	
3	51072-ZZ	BASE, OCT. HS HOLDER	1	
4	880260-98	WALL MOUNT, HS HOLDER	2	
for ITEM 2	5	880003-92	KEY, ALLEN, 2MM	1