



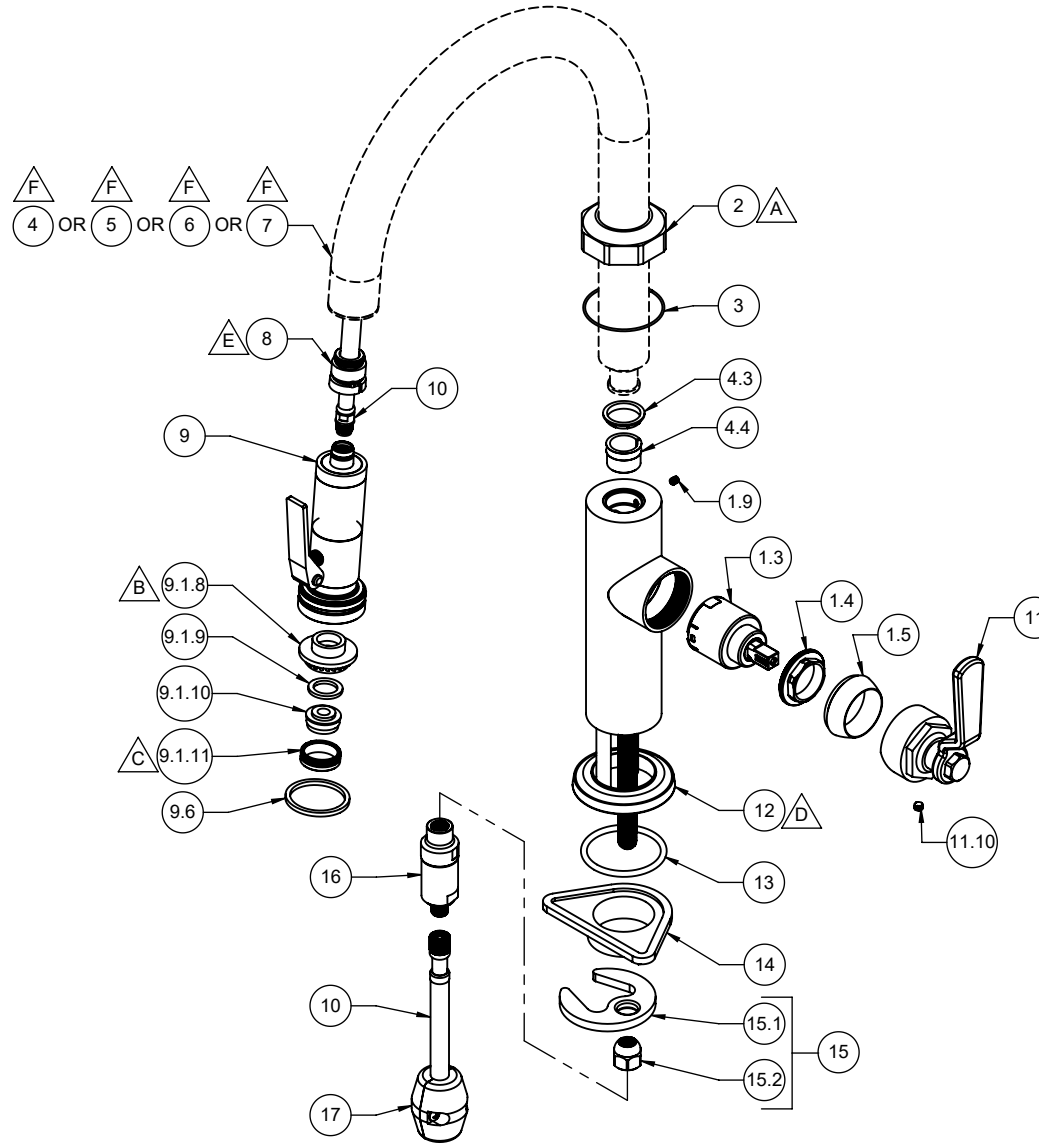
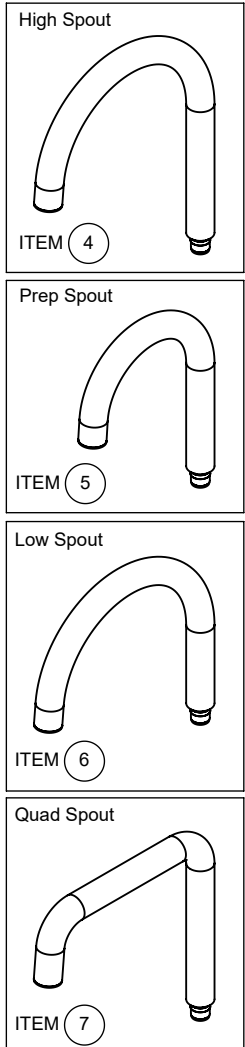
California Faucets®

Spare Parts Diagram Descanso® Works

Pull-Down Kitchen Faucet with Squeeze Sprayer

K81-100SQ-BL
K81-101SQ-BL
K81-102SQ-BL
K81-103SQ-BL

- △ A REQUIRES ITEM (3)
- △ B REQUIRES ITEM (22)
- △ C REQUIRES ITEM (20)
- △ D REQUIRES ITEM (13)
- △ E REQUIRES ITEM (21)
- △ F REQUIRES ITEM (8)



K81-100SQ-BL
K81-101SQ-BL
K81-102SQ-BL
K81-103SQ-BL

To order spare parts add and/or replace as stated below:

SPD- prefix added to part number(s)
-ZZ replaced with finish code (see finish table)
-WW replaced with **-90** (light finish) or **-96** (dark finish)

Ex: **SPD-7-100362-PC** or **SPD-86030-96**

ITEM	PART NO.	DESCRIPTION	QTY.	
11	7-100551-ZZ	ASM, KIT BALL LEVER <i>(incl. 11.10)</i>	1	
11.10	86047-90	SETSCREW 10-24 X 3/16 SCKT HD CONE PT SS	1	
12	10781-ZZ	BASE RING, INDUSTRIAL KIT	1	
13	87139-80	O-RING Ø44.04 X 3.53 (-224) BUNA-N A70	1	
14	880325-81	SPACER, SINGLE HOLE MOUNTING	1	
15	6-200246	KIT, KITCHEN/H2O DISP MNT HDW <i>(incl. 15.1, 15.2)</i>	1	
15.1	880309-98	MOUNTING BRACKET, SINGLE HOLE CRESCENT	1	
15.2	10552-98	NUT, HEX W/ DOME 7/16-24	1	
16	6-200262	KIT, KITCHEN FAUCET CHECKVALVE - 1.85 GPM FLOW	1	
17	6-200249	KIT, KITCHEN HOSE WEIGHT 310g	1	
20	880567-81	TOOL, SQUEEZE SPRAYER AERATOR	1	
21	880533-81	TOOL, SQUEEZE UPGRADE	1	
for ITEM 9.1.8	22	880333-91	KEY, ALLEN 7.0MM, BLACK	1
for ITEM 1.9	23	882042-99	KEY, ALLEN, 5/64", BLACK	1
for ITEM 11.10	24	882043-99	KEY, ALLEN, 3/32", BLACK	1

ITEM	PART NO.	DESCRIPTION	QTY.	
1.3	880297-99	CART 35MM, SNGL LVR (COLD TO HOT ROTATION)	1	
1.4	10564-98	NUT, 35MM CART KIT PACKING	1	
1.5	10565-ZZ	BONNET, STD KIT	1	
1.9	86031-WW	SETSCREW 8-32 X 3/16 SCKT HD CUP PT SS	1	
2	10783-ZZ	TRIM, OCTAGON KIT BODY	1	
3	87338-80	O-RING Ø46.00 X 1.20 (NA) BUNA-N A70	1	
for 100 Series	4	7-100474-ZZ	ASM, 30MM MAIN KIT SPOUT LESS SPRAY INSERT <i>(incl. 4.3, 4.4)</i>	1
4.3	10558-81	BUSHING, KIT SPT ADPTR	1	
4.4	11297-81	FRICTION RING, KIT SPT ADPTR - G2	1	
for 101 Series	5	7-100475-ZZ	ASM, 30MM PREP KIT SPOUT LESS SPRAY INSERT <i>(incl. 4.3, 4.4)</i>	1
for 102 Series	6	7-100476-ZZ	ASM, Ø30MM LOW KIT SPOUT LESS SPRAY INSERT <i>(incl. 4.3, 4.4)</i>	1
for 103 Series	7	7-100477-ZZ	ASM, Ø30MM 2 BEND KIT SPOUT LESS SPRAY INSERT <i>(incl. 4.3, 4.4)</i>	1
8	6-200299	KIT, DETENT, KITCHEN PULL DOWN	1	
9	7-100411-ZZ	ASM, SPRAYER, CONT SQUEEZE PULL DOWN <i>(incl. 9.1.8, 9.1.9, 9.1.10, 9.1.11, 9.6)</i>	1	
9.1.8	11079-81	JET PAD, SQUEEZE SPRAYER	1	
9.1.9	87302-80	WSHR, Ø14.50 X Ø20.50 X 2.0 EPDM A70 (WRAS)	1	
9.1.10	880499-81	INSERT, FULL FLOW, AERATED M24 FLAT	1	
9.1.11	11080-ZZ	SHELL, SQUEEZE SPRAYER AERATOR	1	
9.6	87287-80	O-RING Ø32.99 X 2.62 (-125) BUNA-N A70 SQUARE	1	
10	880338-99	HOSE, NYLON BRAIDED (DN6) W/ SILICONE, M10 MT X M10 F X 65" NSF	1	