



California Faucets®

Spare Parts Diagram

Corsano®

Pull-Down Kitchen Faucet

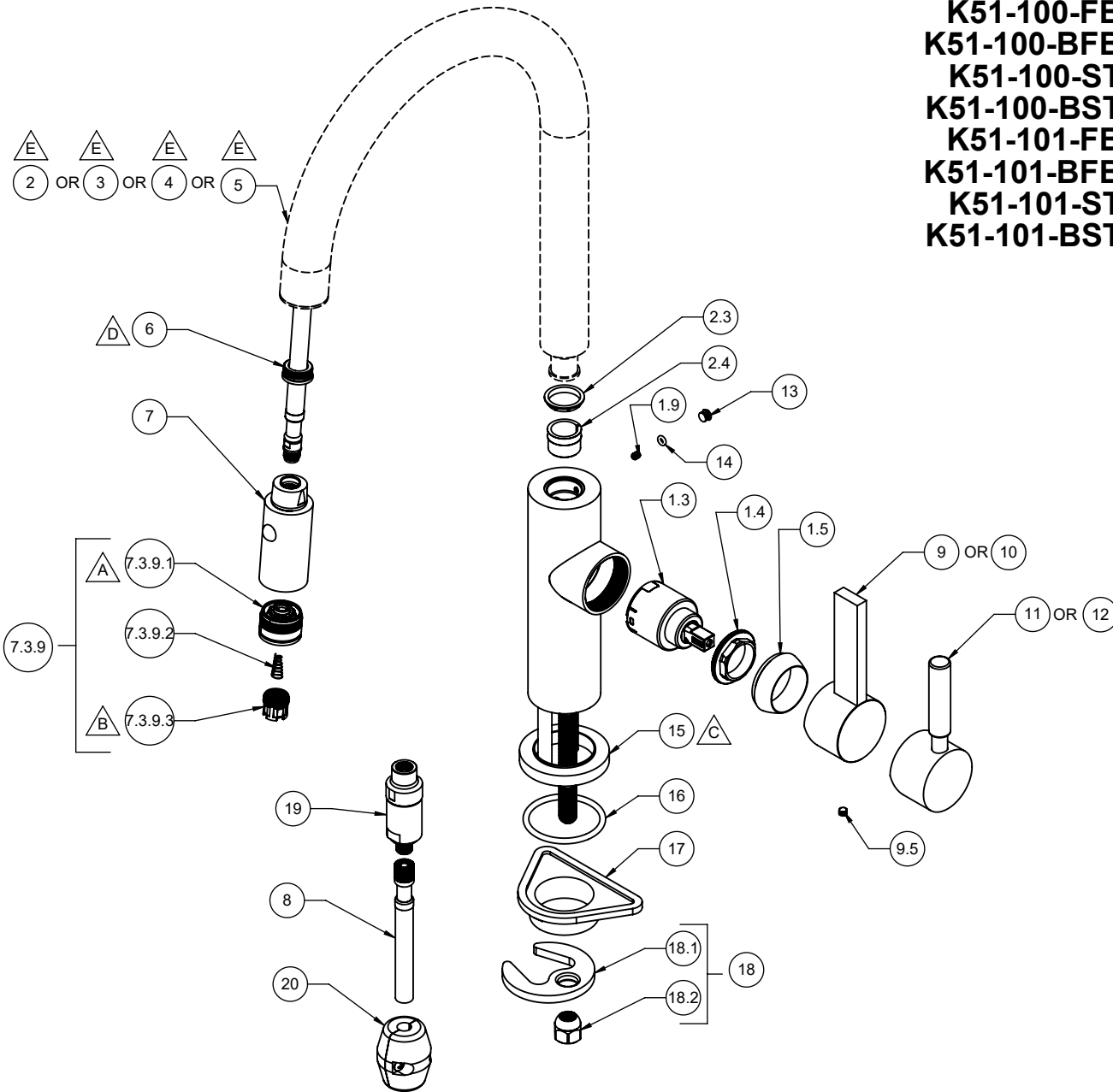
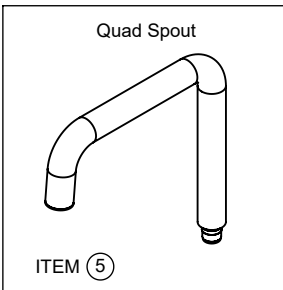
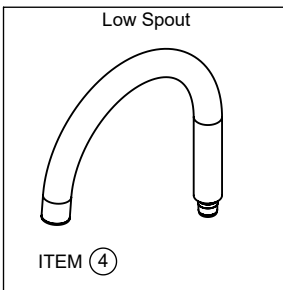
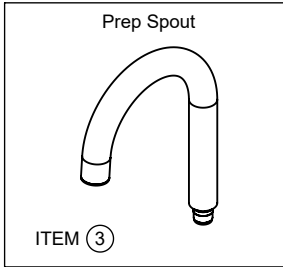
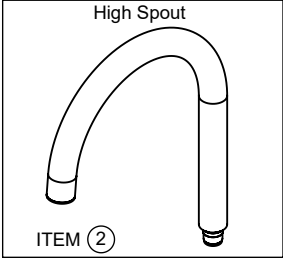
△ REQUIRES ITEM 21

△ REQUIRES ITEM 22

△ REQUIRES ITEM 16

△ REQUIRES ITEM 25

△ REQUIRES ITEM 6



K51-100-FB	K51-102-FB
K51-100-BFB	K51-102-BFB
K51-100-ST	K51-102-ST
K51-100-BST	K51-102-BST
K51-101-FB	K51-103-FB
K51-101-BFB	K51-103-BFB
K51-101-ST	K51-103-ST
K51-101-BST	K51-103-BST

K51-100-FB	K51-102-FB
K51-100-BFB	K51-102-BFB
K51-100-ST	K51-102-ST
K51-100-BST	K51-102-BST
K51-101-FB	K51-103-FB
K51-101-BFB	K51-103-BFB
K51-101-ST	K51-103-ST
K51-101-BST	K51-103-BST

To order spare parts add and/or replace as stated below:

SPD- prefix added to part number(s)

-ZZ replaced with finish code (see finish table)

-WW replaced with **-90** (light finish) or **-96** (dark finish)

Ex: **SPD-7-100463-PC** or **SPD-86030-96**

	ITEM	PART NO	DESCRIPTION	QTY.
	9.5	86136-90	SETSCREW M5X0.8 X 5MM SCKT HD CONE PT SS	1
for BFB series	10	7-100199B-ZZ	ASM, CONT BLADE KIT MBLK LEVER <i>(incl. 9.5)</i>	1
for ST series	11	7-100212-ZZ	ASM, CONT KIT STICK LEVER <i>(incl. 9.5)</i>	1
for BST series	12	7-100212B-ZZ	ASM, CONT STICK KIT LEVER <i>(incl. 9.5)</i>	1
	13	10444-ZZ	CAP, HANDLE SCRW	1
	14	87321-80	O-RING Ø2.80 X 1.90 (NA) BUNA-N A70	1
	15	10508-ZZ	BASE RING, KIT CONT STD	1
	16	87139-80	O-RING Ø44.04 X 3.53 (-224) BUNA-N A70	1
	17	880325-81	SPACER, SINGLE HOLE MOUNTING	1
	18	6-200246	KIT, KITCHEN/H2O DISP MNT HDW <i>(incl. 18.1, 18.2)</i>	1
	18.1	880309-98	MOUNTING BRACKET, SINGLE HOLE CRESCENT	1
	18.2	10552-98	NUT, HEX W/ DOME 7/16-24	1
	19	6-200262	KIT, KITCHEN FAUCET CHECKVALVE - 1.85 GPM FLOW	1
	20	6-200249	KIT, KITCHEN HOSE WEIGHT 310g	1
for ITEM 7.3.9.1	21	880333-91	KEY, ALLEN 7.0MM, BLACK	1
	22	880317-81	TOOL, AERATOR INSERT	1
for ITEM 9.5	23	880007-91	KEY, ALLEN, 2.5MM	1
for ITEM 1.9	24	882042-99	KEY, ALLEN, 5/64", BLACK	1
	25	880533-81	TOOL, SQUEEZE UPGRADE	2

	ITEM	PART NO	DESCRIPTION	QTY.
	1.3	880297-99	CART 35MM, SNGL LVR (COLD TO HOT ROTATION)	1
	1.4	10564-98	NUT, 35MM CART KIT PACKING	1
	1.5	10565-ZZ	BONNET, STD KIT	1
	1.9	86031-WW	SETSCREW 8-32 X 3/16 SCKT HD CUP PT SS	1
for 100 series	2	7-100474-ZZ	ASM, 30MM MAIN KIT SPOUT LESS SPRAY INSERT <i>(incl. 2.3, 2.4)</i>	1
	2.3	10558-81	BUSHING, KIT SPT ADPTR	1
	2.4	11297-81	FRICTION RING, KIT SPT ADPTR - G2	1
for 101 series	3	7-100475-ZZ	ASM, 30MM PREP KIT SPOUT LESS SPRAY INSERT <i>(incl. 2.3, 2.4)</i>	1
for 102 series	4	7-100476-ZZ	ASM, Ø30MM LOW KIT SPOUT LESS SPRAY INSERT <i>(incl. 2.3, 2.4)</i>	1
for 103 series	5	7-100477-ZZ	ASM, Ø30MM 2 BEND KIT SPOUT LESS SPRAY INSERT <i>(incl. 2.3, 2.4)</i>	1
	6	10598-92	INSERT, KIT MAG PULL DN "IRON RING"	1
	7	7-100148-ZZ	SPRAY HEAD, Ø30MM MAG PULL DN - CONT <i>(incl. 7.3.9)</i>	1
	7.3.9	6-200248	KIT, SPRAYER JET/AERATOR <i>(incl. 7.3.9.1, 7.3.9.2, 7.3.9.3)</i>	1
	7.3.9.1	11311-81	FACEPLATE, PULL DOWN SPRAY G2	1
	7.3.9.2	10535-90	SPRING, PULL DOWN SPRAY	1
	7.3.9.3	880553-81	INSERT, AERATOR W/ M16 X 1.0, FULL FLOW	1
	8	880338-99	HOSE, POLY BRAIDED (DN6), M10 MT X M10 F X 59" "NL"	1
for FB series	9	7-100199-ZZ	ASM, CONT KIT BLADE LEVER <i>(incl. 9.5)</i>	1