



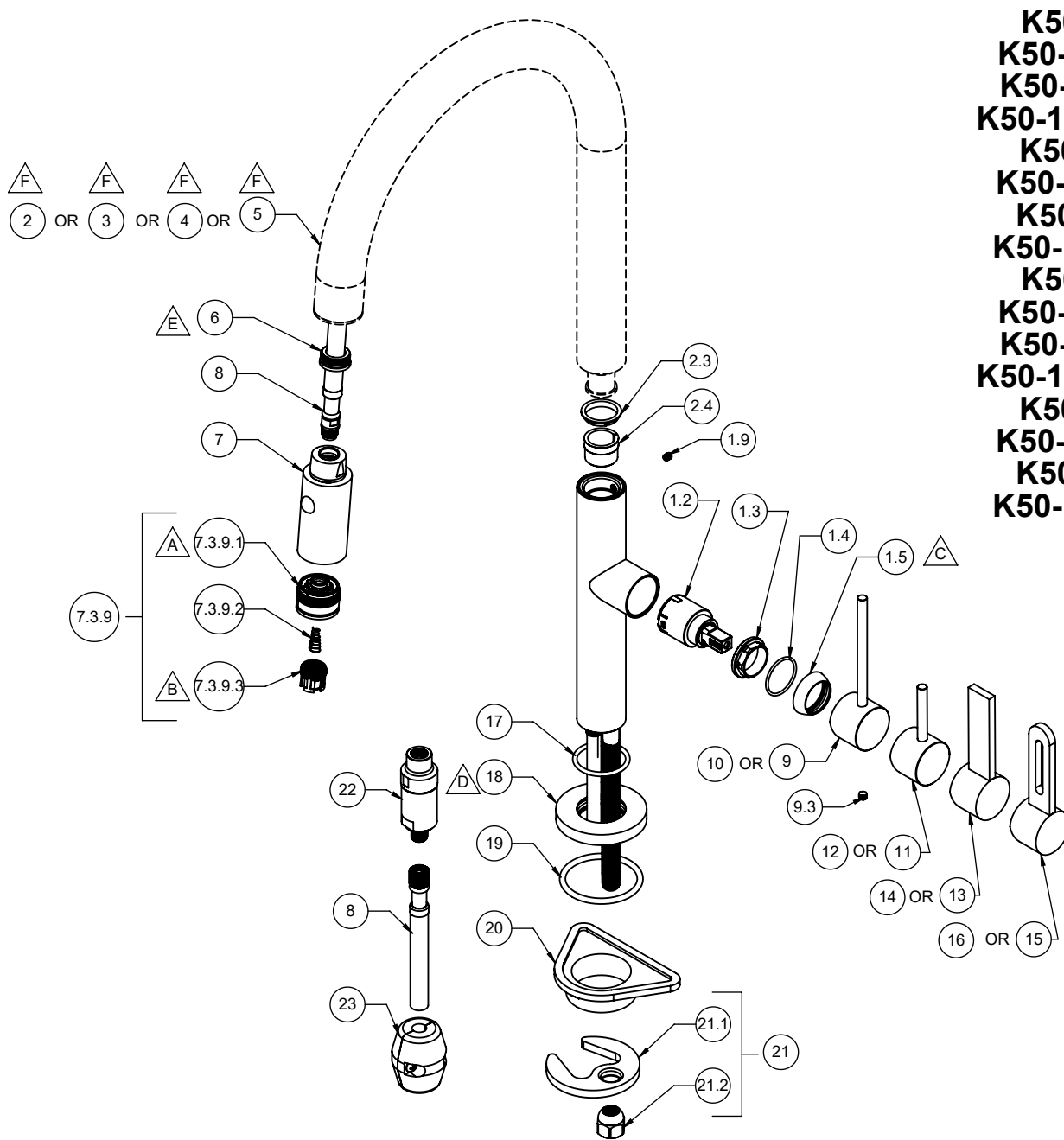
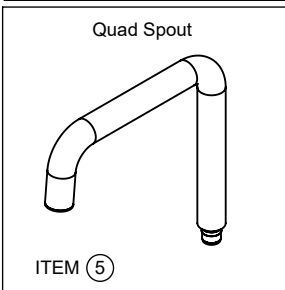
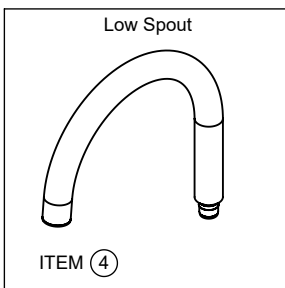
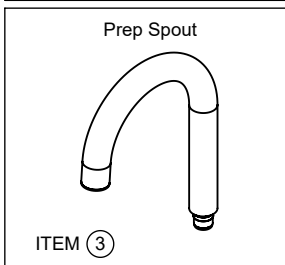
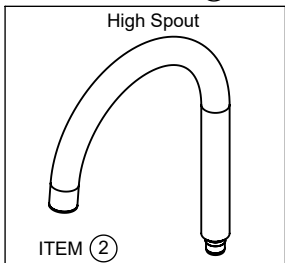
California Faucets®

# Spare Parts Diagram

# Poetto®

## Pull-Down Kitchen Faucet

- △ REQUIRES ITEM 24
- △ REQUIRES ITEM 25
- △ REQUIRES ITEM 1.4
- △ REQUIRES ITEM 17 and 19
- △ REQUIRES ITEM 28
- △ REQUIRES ITEM 6



K50-100-ST	K50-102-ST
K50-100-BST	K50-102-BST
K50-100-SST	K50-102-SST
K50-100-BSST	K50-102-BSST
K50-100-FB	K50-102-FB
K50-100-BFB	K50-102-BFB
K50-100-RB	K50-102-RB
K50-100-BRB	K50-102-BRB
K50-101-ST	K50-103-ST
K50-101-BST	K50-103-BST
K50-101-SST	K50-103-SST
K50-101-BSST	K50-103-BSST
K50-101-FB	K50-103-FB
K50-101-BFB	K50-103-BFB
K50-101-RB	K50-103-RB
K50-101-BRB	K50-103-BRB

<b>K50-100-ST</b>	<b>K50-102-ST</b>
<b>K50-100-BST</b>	<b>K50-102-BST</b>
<b>K50-100-SST</b>	<b>K50-102-SST</b>
<b>K50-100-BSST</b>	<b>K50-102-BSST</b>
<b>K50-100-FB</b>	<b>K50-102-FB</b>
<b>K50-100-BFB</b>	<b>K50-102-BFB</b>
<b>K50-100-RB</b>	<b>K50-102-RB</b>
<b>K50-100-BRB</b>	<b>K50-102-BRB</b>
<b>K50-101-ST</b>	<b>K50-103-ST</b>
<b>K50-101-BST</b>	<b>K50-103-BST</b>
<b>K50-101-SST</b>	<b>K50-103-SST</b>
<b>K50-101-BSST</b>	<b>K50-103-BSST</b>
<b>K50-101-FB</b>	<b>K50-103-FB</b>
<b>K50-101-BFB</b>	<b>K50-103-BFB</b>
<b>K50-101-RB</b>	<b>K50-103-RB</b>
<b>K50-101-BRB</b>	<b>K50-103-BRB</b>

To order spare parts add and/or replace as stated below:

**SPD-** prefix added to part number(s)  
**-ZZ** replaced with finish code (see finish table)  
**-WW** replaced with **-90** (light finish) or **-96** (dark finish)

Ex: **SPD-7-100463-PC** or **SPD-86030-96**

	ITEM	PART NO	DESCRIPTION	QTY.
	7	7-100148-ZZ	SPRAY HEAD, Ø30MM MAG PULL DN - CONT <i>(incl. 7.3.9)</i>	1
	7.3.9	6-200248	KIT, SPRAYER JET/AERATOR <i>(incl. 7.3.9.1, 7.3.9.2, 7.3.9.3)</i>	1
	7.3.9.1	11311-81	FACEPLATE, PULL DOWN SPRAY G2	1
	7.3.9.2	10535-90	SPRING, PULL DOWN SPRAY	1
	7.3.9.3	880553-81	INSERT, AERATOR W/ M16 X 1.0, FULL FLOW	1
for ST series	8	880338-99	HOSE, NYLON BRAIDED (DN6) W/ SILICONE, M10 MT X M10 F X 65" NSF	1
	9	7-100201-ZZ	ASM, Ø30MM CONT KIT LEVER <i>(incl. 9.3)</i>	1
for BST series	9.3	86136-90	SETSCREW M5X0.8 X 5MM SCKT HD CONE PT SS	1
	10	7-100201B-ZZ	ASM, Ø30MM CONT KIT LEVER <i>(incl. 9.3)</i>	1
for SST series	11	7-100209-ZZ	ASM, Ø30MM CONT KIT LEVER <i>(incl. 9.3)</i>	1
for BSST series	12	7-100209B-ZZ	ASM, Ø30MM CONT KIT LEVER - MBLK SHORT <i>(incl. 9.3)</i>	1
for FB series	13	7-100531-ZZ	ASM, KIT FLAT BLADE HDL <i>(incl. 9.3)</i>	1
for BFB series	14	7-100531B-ZZ	ASM, KIT FLAT BLADE HDL <i>(incl. 9.3)</i>	1
for RB series	15	7-100530-ZZ	ASM, KIT ROUNDED BLADE HDL <i>(incl. 9.3)</i>	1
for BRB series	16	7-100530B-ZZ	ASM, KIT ROUNDED BLADE HDL <i>(incl. 9.3)</i>	1
	17	87147-80	O-RING Ø29.82 X 2.62 (-123) BUNA-N A70	1
	18	10509-ZZ	BASE RING, KIT CONT SLIM	1
	19	87139-80	O-RING Ø44.04 X 3.53 (-224) BUNA-N A70	1
	20	880325-81	SPACER, SINGLE HOLE MOUNTING	1
	21	6-200246	KIT, KITCHEN/H2O DISP MNT HDW <i>(incl. 21.1, 21.2)</i>	1
	21.1	880309-98	MOUNTING BRACKET, SINGLE HOLE CRESCENT	1
	21.2	10552-98	NUT, HEX W/ DOME 7/16-24	1
	22	6-200262	KIT, KITCHEN FAUCET CHECKVALVE - 1.85 GPM FLOW	1
	23	6-200249	KIT, KITCHEN HOSE WEIGHT 310g	1
for ITEM 7.3.9.1	24	880333-91	KEY, ALLEN 7.0MM, BLACK	1
	25	880317-81	TOOL, AERATOR INSERT	1
for ITEM 9.3	26	880007-91	KEY, ALLEN, 2.5MM	1
for ITEM 1.9	27	882042-99	KEY, ALLEN, 5/64", BLACK	1
	28	880533-81	TOOL, SQUEEZE UPGRADE	1

for 100 series

for 101 series

for 102 series

for 103 series

ITEM	PART NO	DESCRIPTION	QTY.
1.2	880102-99	CART 25MM, SNGL LVR	1
1.3	10555-98	NUT, 25MM CART KIT PACKING	1
1.4	87145-80	O-RING Ø23.00 X 1.50 (NA) BUNA-N A70	1
1.5	10556-ZZ	BONNET, TRANS KIT	1
1.9	86031-WW	SETSCREW 8-32 X 3/16 SCKT HD CUP PT SS	1
2	7-100474-ZZ	ASM, 30MM MAIN KIT SPOUT LESS SPRAY INSERT <i>(incl. 2.3, 2.4)</i>	1
2.3	10558-81	BUSHING, KIT SPT ADPTR	1
2.4	11297-81	FRICTION RING, KIT SPT ADPTR - G2	1
3	7-100475-ZZ	ASM, 30MM PREP KIT SPOUT LESS SPRAY INSERT <i>(incl. 2.3, 2.4)</i>	1
4	7-100476-ZZ	ASM, Ø30MM LOW KIT SPOUT LESS SPRAY INSERT <i>(incl. 2.3, 2.4)</i>	1
5	7-100477-ZZ	ASM, Ø30MM 2 BEND KIT SPOUT LESS SPRAY INSERT <i>(incl. 2.3, 2.4)</i>	1
6	10598-92	INSERT, KIT MAG PULL DN "IRON RING"	1