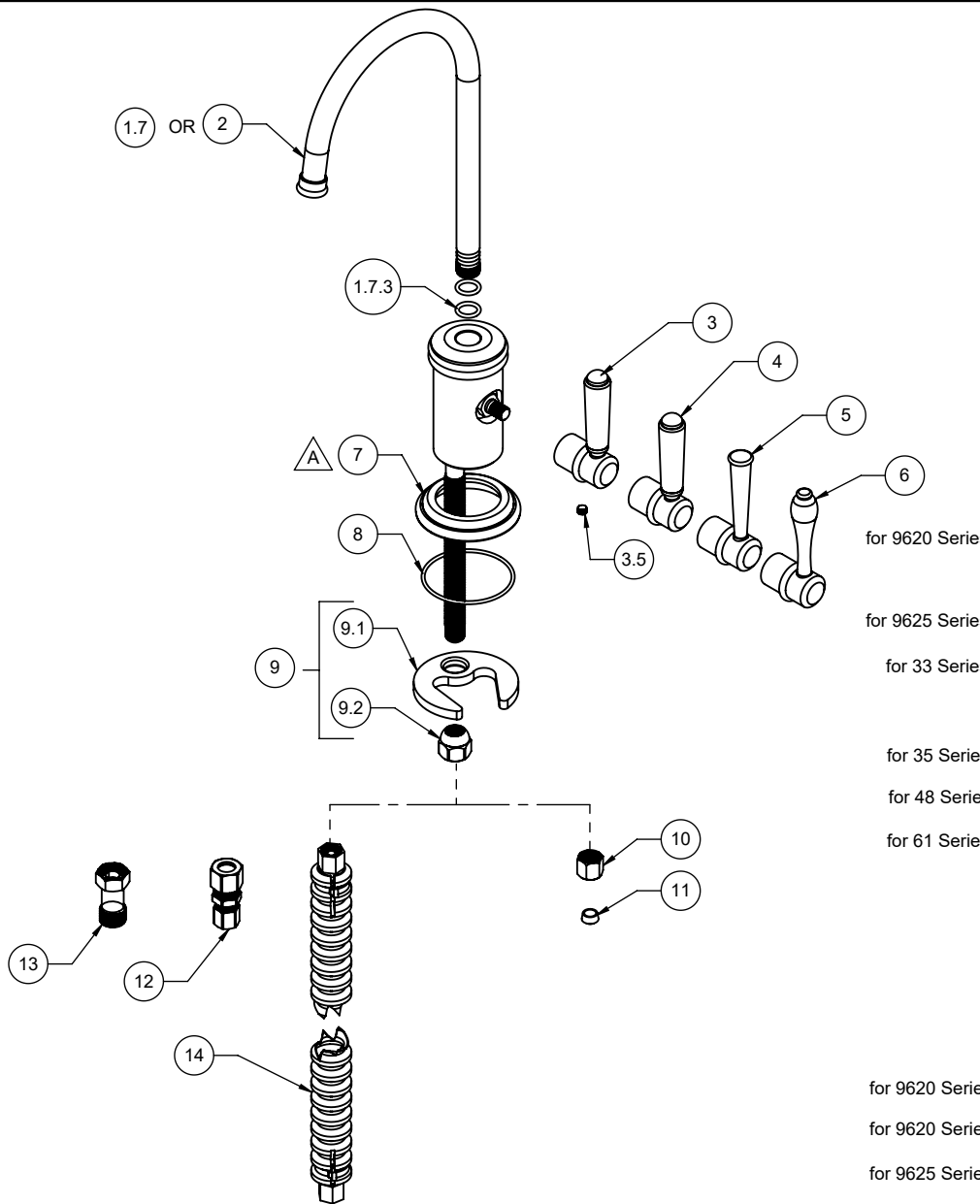


⚠ REQUIRES ITEM ⑧



**9620-K10-33**    **9625-K10-33**  
**9620-K10-35**    **9625-K10-35**  
**9620-K10-48**    **9625-K10-48**  
**9620-K10-61**    **9625-K10-61**

To order spare parts add and/or replace as stated below:

**SPD-** prefix added to part number(s)  
**-ZZ** replaced with finish code (see finish table)  
**-WW** replaced with **-90** (light finish) or **-96** (dark finish)

Ex: **SPD-7-100463-PC** or **SPD-86030-96**

ITEM	PART NO	DESCRIPTION	QTY.
1.7	5-100123-ZZ	ASM, TRAD WATER DISP SPOUT <i>(incl. 1.7.3)</i>	1
1.7.3	882280-99	O-RING 10.00 X 2.00 (-013) BUNA-N A70 (NSF)	2
2	5-100300-ZZ	ASM, TRAD SPOUT HOT/COLD ONLY DISP - G2 <i>(incl. 1.7.3)</i>	1
3	5-100195-ZZ	ASM, ALIGNING WATER DISP LVR - 33 <i>(incl. 3.5)</i>	1
3.5	86047-WW	SETSCREW 10-24 X 3/16 SCKT HD CONE PT SS	1
4	5-100196-ZZ	ASM, ALIGNING WATER DISP LVR - 35 <i>(incl. 3.5)</i>	1
5	5-100198-ZZ	ASM, ALIGNING WATER DISP LVR - 48 <i>(incl. 3.5)</i>	1
6	5-100126-ZZ	ASM, WATER DISP TRAD LVR <i>(incl. 3.5)</i>	1
7	50601-ZZ	RING, TRAD WATER DISP BASE	1
8	87124-80	O-RING Ø47.34 X 1.78(-032) BUNA-N A70	1
9	6-200246	KIT, KITCHEN/H2O DISP MNT HDW <i>(incl. 9.1, 9.2)</i>	1
9.1	880309-98	MOUNTING BRACKET, SINGLE HOLE CRESCENT	1
9.2	10552-98	NUT, HEX W/ DOME 7/16-24	1
10	962587-99	COMP NUT, 1/4" (THD 7/16-24)	1
11	962586-99	1/4" CMP SLEEVE - PLASTIC	1
12	880331-98	FITTING, 3/8" CMP X 1/4" CMP STRAIGHT (NSF-61)	2
13	6-200281.05	ASM, 3/8" COMP (9/16"-24 MALE X FEMALE) FLOW RESTRICTOR - 0.5 GPM	1
14	6-200307	HOSE, HOT WATER, CORRUGATED	1
15	882043-99	KEY, ALLEN, 3/32", BLACK	1