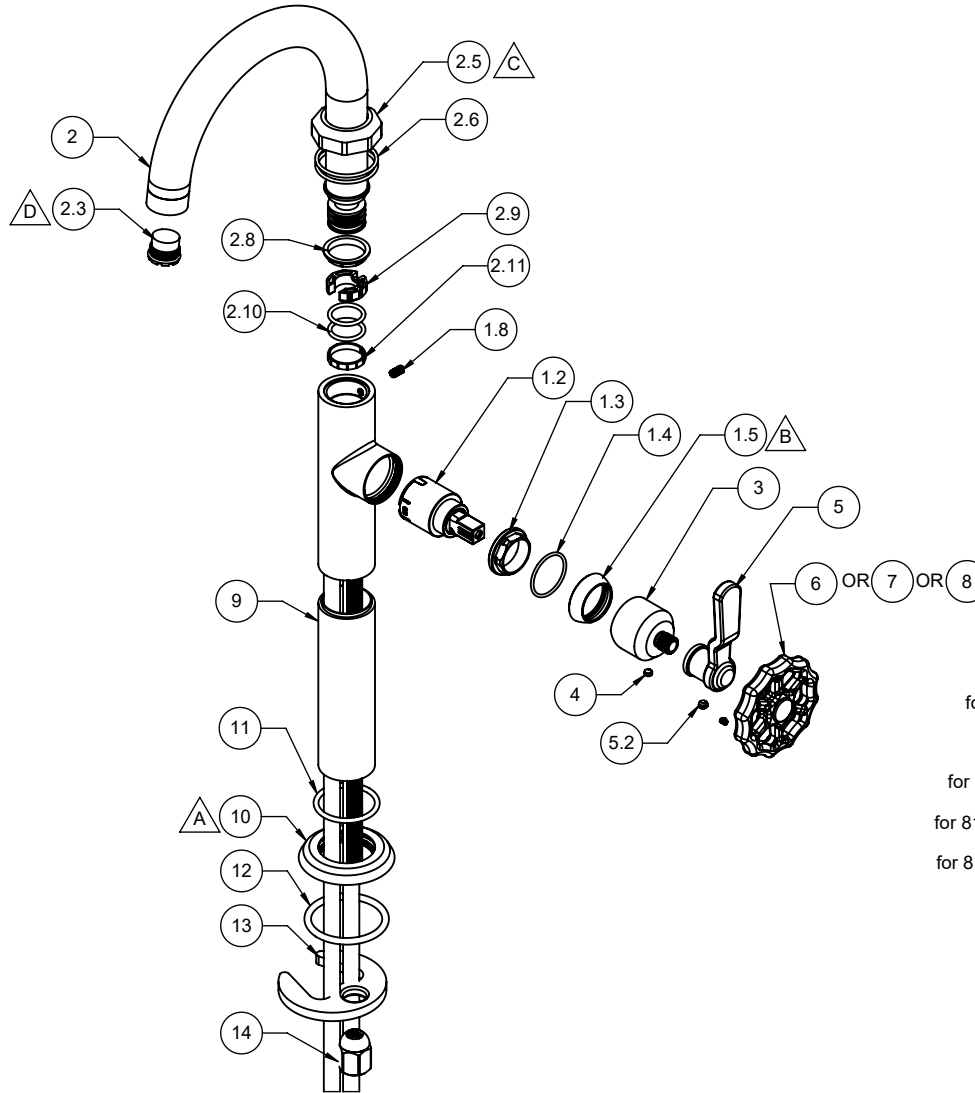


- △ A REQUIRES ITEM (11) AND (12)
- △ B REQUIRES ITEM (1.4)
- △ C REQUIRES ITEM (2.6)
- △ D REQUIRES ITEM (16)



8109WR-2 8109-2 8109WR-1 8109-1
8109WB-2 8109W-2 8109WB-1 8109W-1

To order spare parts add and/or replace as stated below:

SPD- prefix added to part number(s)

-ZZ replaced with finish code (see finish table)

-WW replaced with **-90** (light finish) or **-96** (dark finish)

Ex: **SPD-7-100463-PC** or **SPD-86030-96**

ITEM	PART NO	DESCRIPTION	QTY.
1.2	880102-99	CART 25MM, SNGL LVR	1
1.3	10555-98	NUT, 25MM CART KIT PACKING	1
1.4	87145-80	O-RING Ø23.00 X 1.50 (NA) BUNA-N A70	1
1.5	10556-ZZ	BONNET, TRANS KIT	1
1.8	86032-WW	SETSCREW 8-32 X 5/16 SCKT HD CUP PT SS	1
2	7-100544-ZZ	ASM, Ø22MM SHBF SPOUT, INDUSTRIAL (incl. 2.3, 2.5, 2.6, 2.8, 2.9, 2.10, 2.11)	1
2.3	880356-81	INSERT, 1.2 GPM, TT LAMINAR (CACHE)	1
2.5	11222-ZZ	INDUSTRIAL TRIM RING, SHBF	1
2.6	87196-80	O-RING Ø29.87 X 1.78 (-025) BUNA-N A70	2
2.8	10558-81	BUSHING, KIT SPT ADPTR	1
2.9	11235-81	BUSHING, SHBF SPT ADAPTER	1
2.10	87019-80	O-RING Ø16.00 X 2.00 (NA) EPDM (NSF 61-18)	2
2.11	11301-81	FRICTION RING, SHBF, NSF 61	1
3	11189-ZZ	HDL HUB, SHBF	1
4	86170-90	SETSCREW 8-32 X 1/8" SCKT CONE PT SS	1
5	7-100549-ZZ	ASM, BALL LVR HANDLE, DISPENSER (incl. 5.2)	1
5.2	86235-WW	SETSCREW 10-24 X 1/8 SCKT HD CUP PT SS	1
6	7-100465-ZZ	ASM, SPOKED WHEEL (incl. 4)	1
7	7-100465R-ZZ	ASM, SPOKED WHEEL - RED (incl. 4)	1
8	7-100465B-ZZ	ASM, SPOKED WHEEL - BLACK (incl. 4)	1
9	11190-ZZ	BODY EXTENSION, 30MM X 107MM, SHBF	1
10	11221-ZZ	INDUSTRIAL BASE, SHBF	1
11	87147-80	O-RING Ø29.82 X 2.62 (-123) BUNA-N A70	1
12	87133-80	O-RING Ø37.69 X 3.53(-222) BUNA-N A70	1
13	880309-98	MOUNTING BRACKET, SINGLE HOLE CRESCENT	1
14	10184-98	NUT, HEX W/ DOME	1
16	223472-99	KEY, TT CACHE AERATOR INSERT	1
21	882042-99	KEY, ALLEN, 5/64", BLACK	1
22	882043-99	KEY, ALLEN, 3/32", BLACK	1