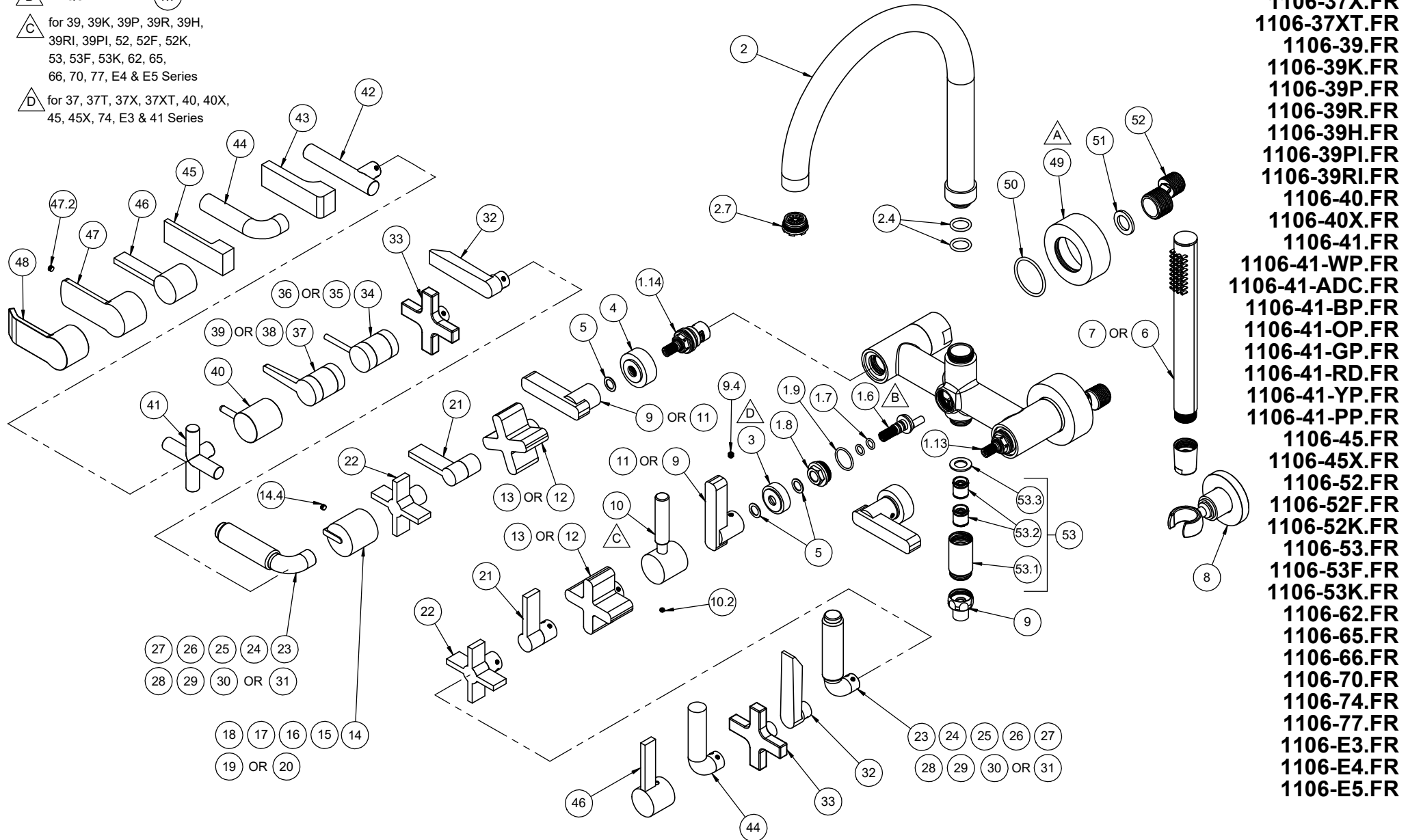


A REQUIRES ITEM (50)

B REQUIRES ITEM (1.7)

C for 39, 39K, 39P, 39R, 39H,
39RI, 39PI, 52, 52F, 52K,
53, 53F, 53K, 62, 65,
66, 70, 77, E4 & E5 Series

D for 37, 37T, 37X, 37XT, 40, 40X,
45, 45X, 74, E3 & 41 Series



- 1106-37.FR
- 1106-37T.FR
- 1106-37X.FR
- 1106-37XT.FR
- 1106-39.FR
- 1106-39K.FR
- 1106-39P.FR
- 1106-39R.FR
- 1106-39H.FR
- 1106-39PI.FR
- 1106-39RI.FR
- 1106-40.FR
- 1106-40X.FR
- 1106-41.FR
- 1106-41-WP.FR
- 1106-41-ADC.FR
- 1106-41-BP.FR
- 1106-41-OP.FR
- 1106-41-GP.FR
- 1106-41-RD.FR
- 1106-41-YP.FR
- 1106-41-PP.FR
- 1106-45.FR
- 1106-45X.FR
- 1106-52.FR
- 1106-52F.FR
- 1106-52K.FR
- 1106-53.FR
- 1106-53F.FR
- 1106-53K.FR
- 1106-62.FR
- 1106-65.FR
- 1106-66.FR
- 1106-70.FR
- 1106-74.FR
- 1106-77.FR
- 1106-E3.FR
- 1106-E4.FR
- 1106-E5.FR

	ITEM	PART NO.	DESCRIPTION	QTY
for 39H series	18	7-100617-ZZ	ASM, HAMMERED SMALL CYL HDL <i>(incl. 14.4)</i>	2
for 39PI series	19	7-100618I-ZZ	ASM, PINSTRIPE SMALL CYL HDL - INTAGLIO <i>(incl. 14.4)</i>	2
for 39RI series	20	7-100616I-ZZ	ASM, RIVULET SMALL CYL HDL - INTAGLIO <i>(incl. 14.4)</i>	2
for 40 series	21	7-100654-ZZ	ASM, SHORT BLADE LEVER HDL <i>(incl. 10.2)</i>	3
for 40X series	22	7-100656-ZZ	ASM, SHORT BLADE CROSS HDL <i>(incl. 10.2)</i>	3
for 41 series	23	7-100697-ZZ	ASM, BRS LEVER HDL, 41 SERIES <i>(incl. 10.2)</i>	3
for 41-ADC series	24	7-100697-ADC-ZZ	ASM, BRS LEVER HDL, ADC, 41 SERIES <i>(incl. 10.2)</i>	3
for 41-RD series	25	7-100697-RD-ZZ	ASM, BRS LEVER HDL, RED, 41 SERIES <i>(incl. 10.2)</i>	3
for 41-WP series	26	7-100698-WP-ZZ	ASM, PORC LEVER HDL, WHITE, 41 SERIES <i>(incl. 10.2)</i>	3
for 41-PP series	27	7-100698-PP-ZZ	ASM, PORC LEVER HDL, PINK, 41 SERIES <i>(incl. 10.2)</i>	3
for 41-OP series	28	7-100698-OP-ZZ	ASM, PORC LEVER HDL, ORANGE, 41 SERIES <i>(incl. 10.2)</i>	3
for 41-GP series	29	7-100698-GP-ZZ	ASM, PORC LEVER HDL, GREEN, 41 SERIES <i>(incl. 10.2)</i>	3
for 41-YP series	30	7-100698-YP-ZZ	ASM, PORC LEVER HDL, YELLOW, 41 SERIES <i>(incl. 10.2)</i>	3
for 41-BP series	31	7-100698-BP-ZZ	ASM, PORC LEVER HDL, BLUE, 41 SERIES <i>(incl. 10.2)</i>	3
for 45 series	32	7-100135-ZZ	ASM, LEVER HANDLE - ART DECO <i>(incl. 10.2)</i>	3
for 45X series	33	7-100267-ZZ	ASM, SQ. CROSS HDL <i>(incl. 10.2)</i>	3
for 52 series	34	7-100506-ZZ	ASM, STICK HDL W/SMOOTH CYL - THERM <i>(incl. 9.4)</i>	2
for 52F series	35	7-100507-ZZ	ASM, STICK HDL W/C. FIBER CYL - THERM <i>(incl. 9.4)</i>	2
for 52K series	36	7-100508-ZZ	ASM, STICK HDL W/KNURLED CYL - THERM <i>(incl. 9.4)</i>	2
for 53 series	37	7-100509-ZZ	ASM, TANG HDL W/SMOOTH CYL - THERM <i>(incl. 9.4)</i>	2
for 53F series	38	7-100510-ZZ	ASM, TANG HDL W/C. FIBER CYL - THERM <i>(incl. 9.4)</i>	2
for 53K series	39	7-100511-ZZ	ASM, TANG HDL W/KNURLED CYL - THERM <i>(incl. 9.4)</i>	2
for 62 series	40	7-623179-ZZ	KIT, LEV HDL, 62 SERIES <i>(incl. 10.2)</i>	2
for 65 series	41	7-653143-ZZ	KIT, CTEMP CROSS HDL, 65 SERIES <i>(incl. 10.2)</i>	2
for 66 series	42	7-663144-ZZ	KIT, CTEMP LEV HDL, 66 SERIES <i>(incl. 10.2)</i>	2
for 70 series	43	7-100320-ZZ	ASM, LEVER, 70 SERIES "BROACHED" <i>(incl. 10.2)</i>	2
for 74 series	44	7-100146-ZZ	ASM, LEVER, 74 SERIES "BROACHED" <i>(incl. 10.2)</i>	3
for 77 series	45	7-100259-ZZ	ASM, LEVER, 77 SERIES "BROACHED" <i>(incl. 10.2)</i>	2
for E3 series	46	7-100319-ZZ	ASM, HANDLE, RD HUB SHORT & BLADE LEVER <i>(incl. 14.4)</i>	3
for E4 series	47	7-100260-ZZ	ASM, LEVER, E4 SERIES <i>(incl. 47.2)</i>	2
	47.2	86136-90	SETSCREW M5X0.8 X 5MM SCKT HD CONE PT SS	1

To order spare parts add and/or replace as stated below:

SPD- prefix added to part number(s)
-ZZ replaced with finish code (see finish table)
-WW replaced with **-90** (light finish) or **-96** (dark finish)

Ex: **SPD-7-100463-PC** or **SPD-86030-96**

	ITEM	PART NO.	DESCRIPTION	QTY
	1.6	10463-98	STEM, DIVERTER, 16 SERIES	1
	1.7	87006-80	O-RING Ø7.65 X 1.78 (-011) BUNA-N A70 (NSF-61-12)	2
	1.8	10404-98	NUT, DIVERTER STEM, 16 SERIES	1
	1.9	87233-80	O-RING Ø20.35 X 1.78 (-019) NBR A70 (NSF61-12 & WRAS)	1
	1.13	880430-99	CART 1/2" 16-T W/FRICTION BRG M24X1 MALE THD - RTC "NL"	1
	1.14	880431-99	CART 1/2" 16-T W/FRICTION BRG M24X1 MALE THD - LTC "NL"	1
	2	7-100162-ZZ	ASM, SPOUT, EXP TUB - CONT RD <i>(incl. 2.4, 2.7)</i>	1
	2.4	87225-80	O-RING Ø15.54 X 2.62 (-114) EPDM A70 (NSF61-12 & WRAS)	2
	2.7	880249-81	INSERT, STD, NEOSTRAHL FULL FLOW - CACHE	1
△	3	10848-ZZ	CAP, DIVERTER, CONT EXP TUB	1
	4	10390-ZZ	CAP, CARTRIDGE	2
	5	87340-81	WSHR Ø.590" X Ø.390" X .030" BLK UHMW	4
	6	5-100061.18-ZZ	ASM, HS-62 W/1.8 FLOW RESTRICTOR - G3	1
	7	5-100061.20-ZZ	ASM, HS-62 W/2.0 FLOW RESTRICTOR - G3	1
	8	5-100068-ZZ	ASM, CONT HDShWR HOLDER - ROUND	1
for 37 series	9	7-100611-ZZ	ASM, RND SQ THERM HDL <i>(incl. 9.4)</i>	3
	9.4	86033-WW	SETSCREW 10-24 X 3/16 SCKT HD CUP PT SS	1
△	10	7-100164-ZZ	ASM, DIV HDL, EXP TUB - CONT <i>(incl. 10.2)</i>	1
	10.2	86030-WW	SETSCREW 8-32 X 1/8 SCKT HD CUP PT SS	1
for 37T series	11	7-100611T-ZZ	ASM, RND SQ THERM HDL - TEAK <i>(incl. 9.4)</i>	3
for 37X series	12	7-100593-ZZ	ASM, 37 SERIES CROSS HDL <i>(incl. 9.4)</i>	3
for 37XT series	13	7-100593T-ZZ	ASM, 37 SERIES CROSS HDL - TEAK <i>(incl. 9.4)</i>	3
for 39 series	14	7-100613-ZZ	ASM, SMOOTH SMALL CYL HDL <i>(incl. 14.4)</i>	2
	14.4	86047-90	SETSCREW 10-24 X 3/16 SCKT HD CONE PT SS	1
for 39K series	15	7-100615-ZZ	ASM, KNURL SMALL CYL HDL <i>(incl. 14.4)</i>	2
for 39P series	16	7-100618-ZZ	ASM, PINSTRIPE SMALL CYL HDL <i>(incl. 14.4)</i>	2
for 39R series	17	7-100616-ZZ	ASM, RIVULET SMALL CYL HDL <i>(incl. 14.4)</i>	2

To order spare parts add and/or replace as stated below:

SPD- prefix added to part number(s)

-ZZ replaced with finish code (see finish table)

-WW replaced with **-90** (light finish) or **-96** (dark finish)

Ex: **SPD-7-100463-PC** or **SPD-86030-96**

	ITEM	PART NO.	DESCRIPTION	QTY
for E5 series	48	7-100367-ZZ	ASM, LEVER, E5 SERIES <i>(incl. 47.2)</i>	2
	49	10692-ZZ	COVER, WALL TUB FILLER	2
	50	87029-80	O-RING, 36.17 X 2.62 (-127) BUNA-N A70	2
	51	87348-80	WSHR Ø16.0MM X Ø25.0MM X 2.5MM	2
	52	11306-98	OFFSET ADAPTER 1/2" NPT X 3/4" NPS X 2" L	2
	53	7-100182-ZZ	ASM, IN-LINE DUAL CHECK 1/2"FIP X 1/2"MIP - CONT <i>(incl. 53.1, 53.2, 53.3)</i>	1
	53.1	10597-ZZ	HOUSING, DUAL CHECK 1/2"FIP X 1/2"MIP - CONT	1
	53.2	880319-81	CHECK VALVE, CV15 FULL FLOW - WHITE	2
	53.3	87167-80	WSHR, Ø12.00 X Ø21.00 X 1.50MM EPDM A70 (WRAS)	1
for ITEM 2.7	56	223473-99	KEY, STD CACHE AERATOR INSERT	1
for ITEM 10.2	62	882042-99	KEY, ALLEN, 5/64", BLACK	1
for ITEM 9.4, 14.4	63	882043-99	KEY, ALLEN, 3/32", BLACK	1
for ITEM 47.2	64	880007-91	KEY, ALLEN, 2.5MM	1