

9511R

Retrofit Kit for Floor Mount Tub Filler

Installation Instructions

CALIFORNIA FAUCETS RECOMMENDS THAT ALL PLUMBING PRODUCTS BE INSTALLED BY A LICENSED PROFESSIONAL

IMPORTANT: Read all instructions prior to installation and provide copy of instructions to consumer.

DISCLAIMER: To conform to many local codes and/or ordinances, it may be required that this product be installed in conjunction with an approved tempering valve.

Operating Specifications:

Recommended Supply Pressure: 20 to 70 psi [1.4 to 4.8 bar] ^{††}

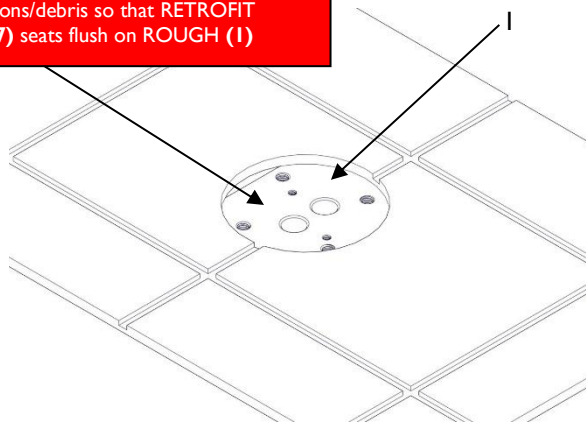
* Operating pressures between hot and cold supplies should vary no more than 30 psi [2.1 bar].

† If water pressure exceeds 70 psi [4.8 bar], install a Pressure-Reducing Valve (RPV).

1 PREPARING ROUGH

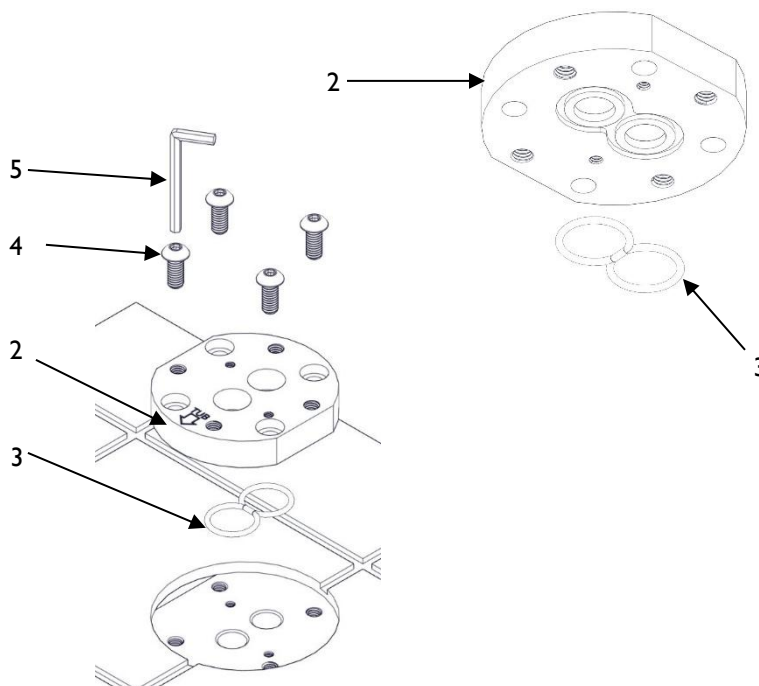
- Clean top surface and of ROUGH (1) so that no debris or obstruction is present

WARNING: Top surface of ROUGH (1) must be clean and free of any obstructions/debris so that RETROFIT PLATE (7) seats flush on ROUGH (1)



2 ATTACHING RETROFIT PLATE

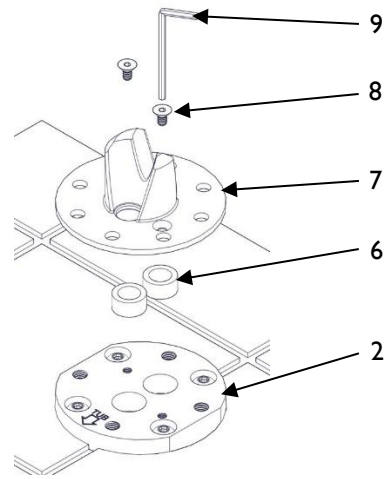
- Place GASKET (3) in retrofit PLATE (2)
- Secure retrofit PLATE (2) in place with four SCREWS (4) using 3/16" hex KEY (5)



- Place BUSHINGS (6) into retrofit PLATE (2)

Important: Lubricant MUST be on the inside of each BUSHING (6), if not apply Plumber's Grease to BUSHING (6)

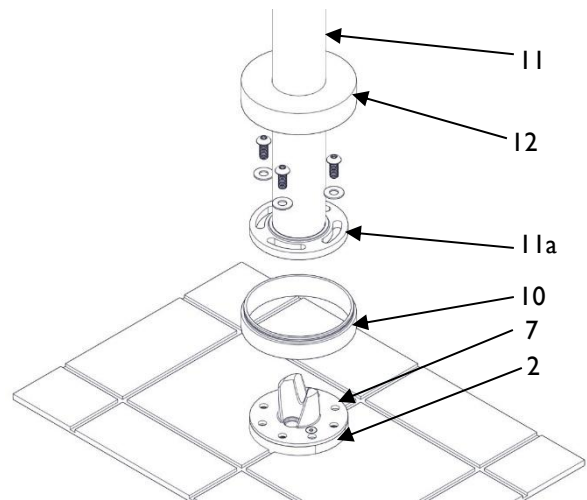
- Attach GUIDE (7) with two SCREWS (8) using 1/8" hex KEY (9)



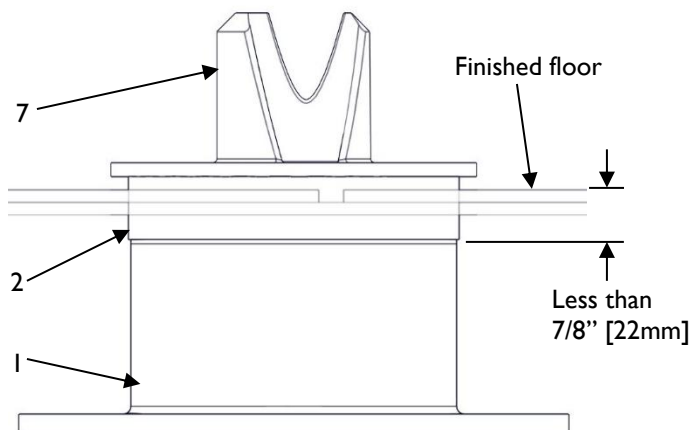
BASE RING EXTENSION (if needed)

Important: Base ring EXTENSION (10) will only be needed if the ROUGH (1) is mounted less than 7/8" [22mm] from the finished floor.

- If needed, base ring EXTENSION (10) can be ordered as SPD-11513-ZZ
- Place EXTENSION (10) over GUIDE (7)
- Install TUB FILLER (11) as described in 1111-XX_ii Single Hole Tub Filler – Trim Only Installation Instructions
- Check for leaks around mounting FLANGE (11a) and retrofit PLATE (2)
- Slide BASE RING (12) onto EXTENSION (10)



Base Ring Extension needed



Base Ring Extension not needed

